

Operating Instructions LCD Television



For more detailed instructions, refer to the Operating Instructions on the CD-ROM.

To view the Operating Instructions on the CD-ROM, you need a computer equipped with a CD-ROM drive, and Adobe® Reader® (Version 8.0 or later is recommended) installed on your computer.

Depending on the operating system or settings on your computer, the Operating Instructions may not start automatically.

In this case, open the PDF file under the "MANUAL" folder manually to view the instructions.

VIERA

Contents

Be Sure to Read

Safety Precautions.....	2
Maintenance.....	3

Quick Start Guide

Accessories.....	3
Identifying Controls.....	5
Basic Connection.....	7
Auto Setup.....	9
Using "VIERA Connect".....	13
How to Use VIERA TOOLS.....	13
Viewing 3D images.....	14
How to Use Menu Functions.....	17
Specifications.....	24

Thank you for purchasing this Panasonic product.
Please read these instructions carefully before operating this product and retain them for future reference.

The images shown in this manual are for illustrative purposes only.
Please refer to Pan European Guarantee Card if you need to contact your local Panasonic dealer for assistance.



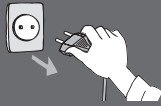
Safety Precautions

Warning

Handling the mains plug and lead

- Insert the mains plug fully into the socket outlet. (If the mains plug is loose, it could generate heat and cause fire.)
- Ensure that the mains plug is easily accessible.
- Do not touch the mains plug with a wet hand. This may cause electrical shock.
- Do not damage the mains lead, damaged lead may cause fire or electrical shock.
 - Do not move the TV with the lead plugged into a socket outlet.
 - Do not place a heavy object on the lead or place the lead near a high temperature object.
 - Do not twist the lead, bend it excessively or stretch it.
 - Do not pull on the lead. Hold onto the mains plug body when disconnecting the plug.
 - Do not use a damaged mains plug or socket outlet.
- Ensure the TV does not crush the mains lead.

If you find any abnormality, remove the mains plug immediately!



AC 220-240 V
50 / 60 Hz



Power source / Installation

- This TV is designed for:
 - AC 220-240 V, 50 / 60 Hz
 - Table-top use

Do not remove covers and NEVER modify the TV yourself

- High voltage components may cause serious electrical shock, do not remove the rear cover as live parts are accessible when it is removed.
- There are no user serviceable parts inside.
- Have the TV checked, adjusted or repaired at your local Panasonic dealer.

Do not expose the TV to direct sunlight and other sources of heat

- Avoid exposing the TV to direct sunlight and other sources of heat.



To prevent the spread of fire, keep candles or other open flames away from this product at all times

Do not expose to rain or excessive moisture

- To prevent damage which might result in electric shock or fire, do not expose this TV to rain or excessive moisture.
- This TV must not be exposed to dripping or splashing water and objects filled with liquid, such as vases, must not be placed on top of or above the TV.

Do not place foreign objects inside the TV

- Do not allow any objects to drop into the TV through the air vents as fire or electric shock may result.

Do not place the TV on sloped or unstable surfaces, and ensure that the TV does not hang over the edge of the base

- The TV may fall or tip over.

Use only original dedicated stand / mounting equipment

- Using an unapproved stand or other fixtures may make the TV unstable, risking injury. Be sure to ask your local Panasonic dealer to perform the setup or installation.
- Use approved stands (p. 4) / wall-hanging brackets.

Do not allow children to handle SD Card or dangerous parts

- As with any small object, the SD Card could be swallowed by young children. Please remove SD Card immediately after use and store out of reach of children.
- This product contains possibly dangerous parts that can be breathed in or swallowed by young children accidentally. Keep these parts out of reach of young children.

Caution

When cleaning the TV, remove the mains plug

- Cleaning an energized TV may cause electric shock.

Remove the mains plug from the wall socket when the TV is not in use for a prolonged period of time

- This TV will still consume some power even in the Off mode, as long as the mains plug is still connected.

Do not expose your ears to excessive volume from the headphones

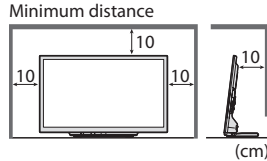
- Irreversible damage can be caused.

Do not apply strong force or impact to the display panel

- This may cause damage resulting in injury.

Do not block the rear air vents

- Adequate ventilation is essential to prevent failure of electronic components.
- Ventilation should not be impeded by covering the ventilation openings with items such as newspapers, table cloths and curtains.
- We recommend that a gap of at least 10 cm is left all around this TV even when placed inside a cabinet or between shelves.
- When using the stand, keep the space between the bottom of the TV and the surface where the TV is set.
- If stand is not used, ensure the vents in the bottom of the TV are not blocked.



Maintenance

First, remove the mains plug from the socket outlet.

Display panel, Cabinet, Stand

Regular care :

Gently wipe the surface of the display panel, cabinet, or stand by using a soft cloth to clean the dirt or fingerprints.

For stubborn dirt :

Dampen a soft cloth with clean water or diluted neutral detergent (1 part detergent to 100 parts water). Then wring the cloth and wipe the surface. Finally, wipe away all the moisture.

Caution

- Do not use a hard cloth or rub the surface too hard. This may cause scratches on the surface.
- Take care not to subject the TV's surfaces to water or detergent. A liquid inside the TV could lead to product failure.
- Take care not to subject the surfaces to insect repellent, solvent, thinner or other volatile substances. This may degrade surface quality or cause peeling of the paint.
- The surface of the display panel is specially treated and may be easily damaged. Take care not to tap or scratch the surface with your fingernail or other hard objects.
- Do not allow the cabinet and stand to make contact with a rubber or PVC substance for a long time. This may degrade surface quality.

Mains plug

Wipe the mains plug with a dry cloth at regular intervals. Moisture and dust may lead to fire or electrical shock.

Accessories

Standard accessories

Remote Control

- N2QAYB000572



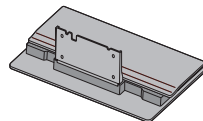
Batteries for the Remote Control (2)

- R6
- ➔ (p. 5)



Stand

- ➔ (p. 4)



Operating Instructions

Pan European Guarantee Card

- Accessories may not be placed all together. Take care not to throw them away unintentionally.
- This product contains possibly dangerous parts (such as plastic bags), that can be breathed in or swallowed by young children accidentally. Keep these parts out of reach of young children.

Attaching the stand

Warning

Do not disassemble or modify the stand.

- Otherwise the TV may fall over and become damaged, and personal injury may result.

Caution

Do not use any other TV and displays.

- Otherwise the TV may fall over and become damaged, and personal injury may result.

Do not use the stand if it becomes warped or physically damaged.

- If you use the stand while it is physically damaged, personal injury may result. Contact your nearest Panasonic dealer immediately.

During set-up, make sure that all screws are securely tightened.

- If insufficient care is taken to ensure screws are properly tightened during assembly, the stand will not be strong enough to support the TV, and it might fall over and become damaged, and personal injury may result.

Ensure that the TV does not fall over.

- If the TV is knocked or children climb onto the stand with the TV installed, the TV may fall over and personal injury may result.

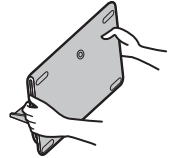
Two or more people are required to install and remove the TV.

- If two or more people are not present, the TV may be dropped, and personal injury may result.

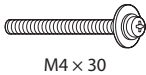
Do not tilt the TV by placing something between the stand and the floor. TV may fall over and become damaged, and personal injury may result.



Stand is very heavy. Please handle with both hands as shown in image.



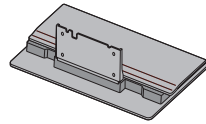
Assembly screw (4)



M4 x 30

Stand

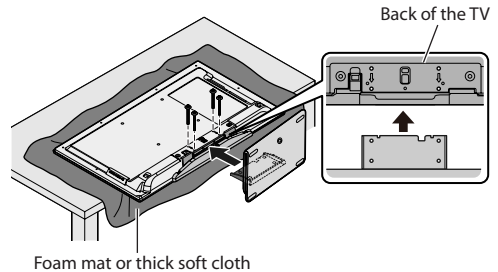
- TBL5ZX0173 (TX-L32DT35E)
- TBL5ZX0172 (TX-L37DT35E)



Securing the TV

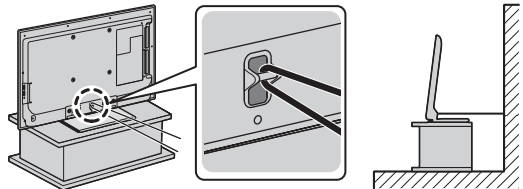
Use the assembly screws to fasten securely.

- Make sure that the screws are securely tightened.
- Carry out the work on a horizontal and level surface.
- Depending on the length of the screw driver you use, it is difficult to tighten the two screws at the bottom. Make sure all screws are securely tightened.



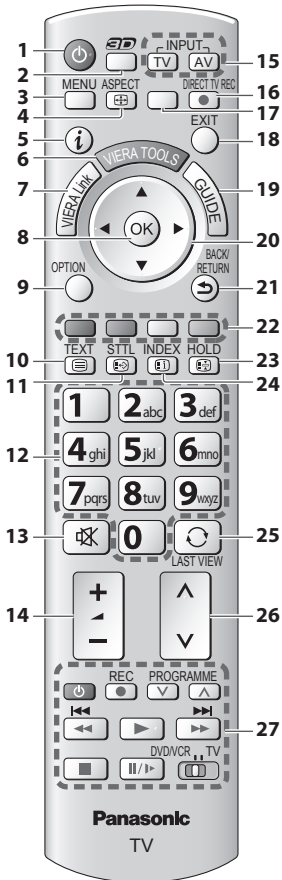
To prevent from falling, please secure the TV to the wall by using strong string or wire.

- Put the strong string or wire through the hole on the bottom rear of the TV as shown in the illustration.



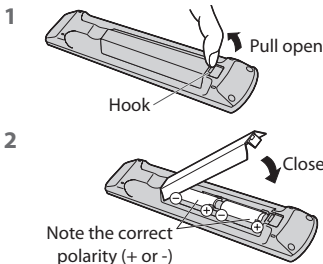
Identifying Controls

Remote Control



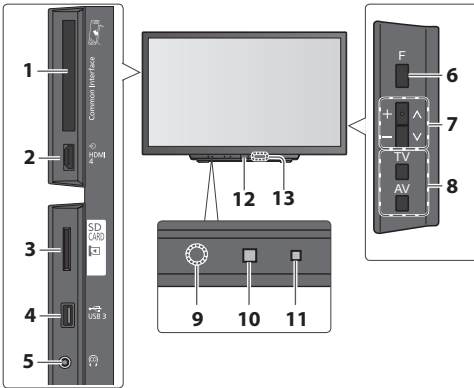
- 1 Standby On / Off switch**
 - Switches TV On or Off standby
- 2 3D button**
 - Switches to the viewing mode between 2D and 3D
- 3 [Main Menu]**
 - Press to access Picture, Sound, Timer and Setup Menus
- 4 Aspect**
 - Changes aspect ratio
- 5 Information**
 - Displays channel and programme information
- 6 VIERA TOOLS**
 - Displays some special feature icons and accesses easily
- 7 [VIERA Link Menu]**
- 8 OK**
 - Confirms selections and choices
 - Press after selecting channel positions to quickly change channel
 - Displays the Channel List
- 9 [Option Menu]**
 - Easy optional setting for viewing, sound, etc.
- 10 Teletext**
 - Switches to teletext mode
- 11 Subtitles**
 - Displays subtitles
- 12 Numeric buttons**
 - Changes channel and teletext pages
 - Sets characters
 - When in Standby mode, switches TV On (Press for about 1 second)
- 13 Sound Mute**
 - Switches sound mute On or Off
- 14 Volume Up / Down**
- 15 Input mode selection**
 - TV - switches DVB-S / DVB-C / DVB-T / Analogue mode
 - AV - switches to AV input mode from Input Selection list
- 16 Direct TV Recording**
 - Records programme immediately in DVD Recorder / VCR with Q-Link or VIERA Link connection
- 17 [VIERA Connect]**
 - Displays VIERA Connect home screen
- 18 Exit**
 - Returns to the normal viewing screen
- 19 TV Guide**
- 20 Cursor buttons**
 - Makes selections and adjustments
- 21 Return**
 - Returns to the previous menu / page
- 22 Coloured buttons (red-green-yellow-blue)**
 - Used for the selection, navigation and operation of various functions
- 23 Hold**
 - Freeze / unfreeze picture
 - Holds the current teletext page (teletext mode)
- 24 Index**
 - Returns to the teletext index page (teletext mode)
- 25 Last view**
 - Switches to previously viewed channel or input mode
- 26 Channel Up / Down**
- 27 Connected equipment operations**

■ Installing / removing remote's batteries



Caution

- Incorrect installation may cause battery leakage and corrosion, resulting in damage to the remote control.
- Do not mix old and new batteries.
- Replace only with same or equivalent type. Do not mix different battery types (such as alkaline and manganese batteries).
- Do not use rechargeable (Ni-Cd) batteries.
- Do not burn or break up batteries.
- Do not expose batteries to excessive heat such as sunshine, fire or the like.
- Make sure you dispose of batteries correctly.
- Ensure batteries are replaced correctly, there is danger of explosion and fire if battery is reversed.
- Do not disassemble or modify the remote control.



- 1 CI slot**
- 2 HDMI4 terminal**
- 3 SD Card slot**
- 4 USB 3 port**
- 5 Headphones jack**
- 6 Function select**
 - [Volume] / [Contrast] / [Brightness] / [Colour] / [Sharpness] / [Tint] (NTSC signal) / [Bass]* / [Treble]* / [Balance] / [Auto Setup]
 - *[Music] or [Speech] mode in the Sound Menu
- 7 Channel Up / Down, Value change (when using the F button), Switching the TV On (press either button for about 1 second when in Standby mode)**

- 8 Changes the input mode**
- 9 Remote control signal receiver**
 - Do not place any objects between the TV remote control signal receiver and remote control.
- 10 C.A.T.S. (Contrast Automatic Tracking System) sensor**
 - Senses brightness to adjust picture quality when [Eco Mode] in the Picture Menu is set to [On] ➔ (p. 18)
- 11 Power and Timer LED**
 - **Red** : Standby
 - **Green** : On
 - **Orange** : Timer Programming On
 - **Orange (flash)** :
Recording of Timer Programming, Direct TV Recording or One Touch Recording in progress
 - **Red with orange flash** :
Standby with Timer Programming On, Direct TV Recording or One Touch Recording
 - The LED blinks when the TV receives a command from the remote control.
- 12 Mains power On / Off switch**
 - Use to switch the mains power.
 - If you turned the TV Off during Standby mode by the remote control last time, the TV will be in Standby mode when you turn the TV On with Mains power On / Off switch.
- 13 Infrared transmitter for 3D Eyewear**
 - Do not place any objects between the transmitter and 3D Eyewear.

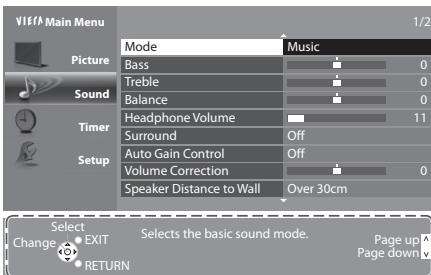
Using the On Screen Displays - Operation guide

Many features available on this TV can be accessed via the On Screen Display menu.

Operation guide

Operation guide will help you to operate by using the remote control.

Example : [Sound Menu]



Operation guide

How to use remote control

- Open the main menu
- Move the cursor / select the menu item / select from a range of options
- Move the cursor / adjust levels / select from a range of options
- Access the menu / store settings after adjustments have been made or options have been set
- Return to the previous menu
- Exit the menu system and return to the normal viewing screen

Auto power standby function

The TV will automatically go to Standby mode in the following conditions :

- no signal is received and no operation is performed for 30 minutes in Analogue TV mode
- [Off Timer] is active in the Timer Menu (p. 20)
- no operation is performed for the period selected in [Auto Standby] (p. 20)
- This function does not affect the recording of Timer Programming, Direct TV Recording and One Touch Recording.

Basic Connection

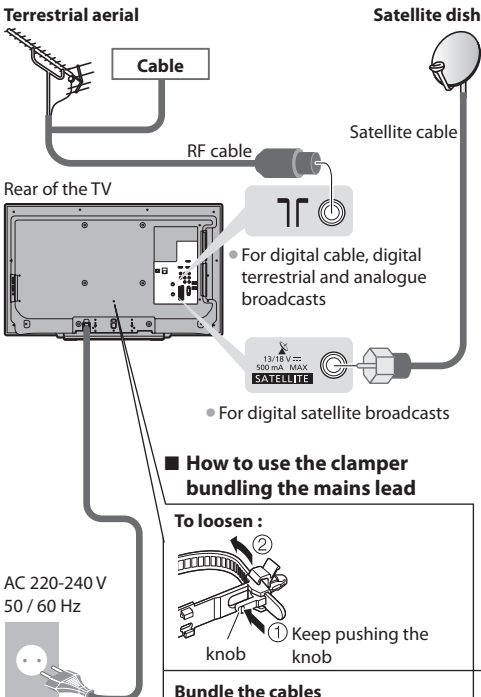
External equipment and cables shown are not supplied with this TV.
Please ensure that the unit is disconnected from the mains socket before attaching or disconnecting any leads.
There are some restrictions on placement for viewing 3D images. For details ► (p. 14, 16)

Example 1 Connecting dish or aerial

TV only

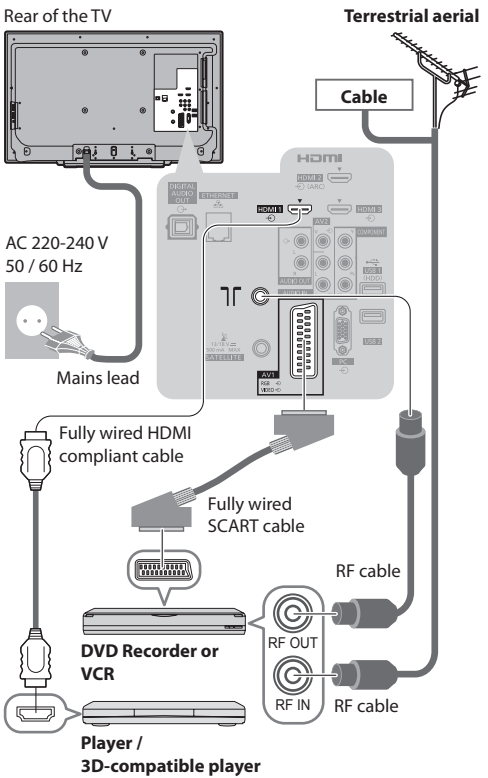
To ensure your satellite dish is correctly installed, please consult your local dealer.

- Also please consult the received satellite broadcasting companies for details.



Example 2 Connecting DVD Recorder / VCR and Player

TV, DVD Recorder / VCR and Player



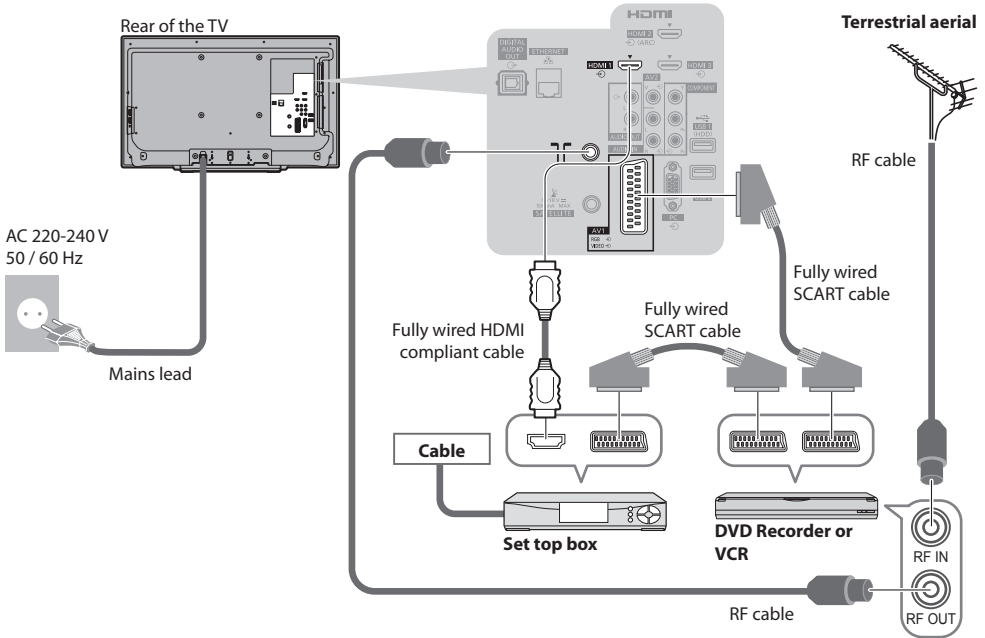
Basic Connection

- Do not bundle the Satellite cable, RF cable and mains lead together (could cause distorted image).
- Fix cables with clammers as necessary.
- When using the optional accessory, follow the option's assembly manual to fix cables.

Example 3

Connecting DVD Recorder / VCR and Set top box

TV, DVD Recorder / VCR and Set top box



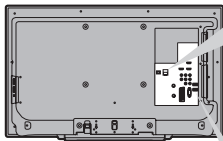
■ Connecting to the network environment (Network connections)

To enable the network service functions (VIERA Connect, etc.), you need to connect the TV to a broadband network environment.

- If you do not have any broadband network services, please consult your retailer for assistance.
- Connect with LAN cable (Wired connection) or Wireless LAN Adaptor (Wireless connection).
- Setup of the network connection will start after the tuning (when first using the TV) ➔ (p. 10 - 12)

Rear of the TV

Wired connection



LAN cable (Shielded)

- Use the Shielded Twist Pair (STP) LAN cable.

Internet environment

Wireless connection

Wireless LAN Adaptor and Extension cable

- Connect to the USB 1, 2 or 3 port.



Internet environment

Access point

Note

- To watch 3D contents ➔ (p. 14)
- Connect to the TV's AV1 for a DVD Recorder / VCR supporting Q-Link.
- For HDMI-compatible equipment, possible to connect to HDMI terminals (HDMI1 / HDMI2 / HDMI3 / HDMI4) by using HDMI cable.
- Please also read the manual of the equipment being connected.
- Keep the TV away from electronic equipment (video equipment, etc.) or equipment with an infrared sensor. Otherwise, distortion of image / sound may occur or operation of other equipment may be interfered.

Auto Setup

Search and store TV channels automatically.

- These steps are not necessary if the setup has been completed by your local dealer.
- Please complete connections (p. 7, 8) and settings (if necessary) of the connected equipment before starting Auto Setup. For details of settings for the connected equipment, read the manual of the equipment.

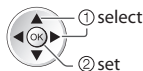


1 Plug the TV into mains socket and switch On

- Takes a few seconds to be displayed
- If the red LED shows on the TV, press the Standby On / Off switch on the remote control for about 1 second.

2 Select the language

Menüsprache			
Deutsch	Dansk	Polski	Srpski
English	Svenska	Čeština	Hrvatski
Français	Norsk	Magyar	Slovensčina
Italiano	Suomi	Slovenčina	Latviešu
Español	Türkçe	Български	eesti keel
Português	Ελληνικά	Română	Lietuvių
Nederlands			



3 Select your country

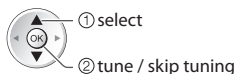
Country		
Germany	Denmark	Poland
Austria	Sweden	Czech
France	Norway	Hungary
Italy	Finland	Slovakia
Spain	Luxembourg	Slovenia
Portugal	Belgium	Croatia
Switzerland	Netherlands	Estonia
Malta	Turkey	Lithuania
Andorra	Greece	Others



- Depending on the country you select, select your Region or store the Child Lock-PIN number ("0000" cannot be stored) by following the on screen instructions.

4 Select the mode you want to tune

TV Signal Selection	
<input type="checkbox"/>	DVB-S
<input type="checkbox"/>	DVB-C
<input type="checkbox"/>	DVB-T
<input type="checkbox"/>	Analogue
Start Auto Setup	



- : tune (search for the available channels)
- : skip tuning

5 Select [Start Auto Setup]

TV Signal Selection	
<input type="checkbox"/>	DVB-S
<input type="checkbox"/>	DVB-C
<input type="checkbox"/>	DVB-T
<input type="checkbox"/>	Analogue
Start Auto Setup	

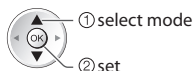


- Auto Setup will start to search for TV channels and store them. The stored channels and sorted channel order vary depending on the country, area, broadcasting system and conditions of signal reception.

Auto Setup screen varies depending on the country you select.

1 DVB-S Search Mode

Search Mode
Free Channels
All Channels

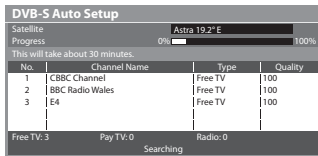


2 DVB-S Satellite Search

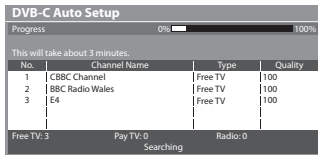
DVB-S Auto Setup	
Satellite	Checking LNB2
Progress	0% 100%
This will take up to 40 minutes.	
Satellite	
Astra 19.2°E	
Hot Bird 13°E	
Press EXIT to skip Satellite Installation	
Searching Satellite	



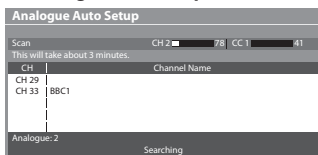
3 [DVB-S Auto Setup]



5 [DVB-C Auto Setup]

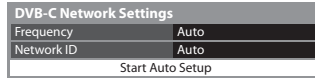


7 [Analogue Auto Setup]



4 [DVB-C Network Settings]

- Depending on the country you select, select your cable provider beforehand by following the on screen instructions.



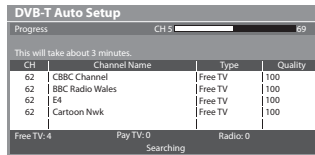
- select
[Start Auto Setup]
- access



Normally set [Frequency] and [Network ID] to [Auto].

If [Auto] is not displayed or if necessary, enter [Frequency] and [Network ID] specified by your cable provider with numeric buttons.

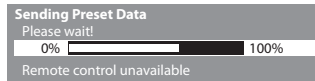
6 [DVB-T Auto Setup]



- Depending on the country you select, the channel selection screen will be displayed after DVB-T Auto Setup if multiple channels have the same logical channel number. Select your preferred channel or exit the screen for automatic selections.

8 Preset Download

If Q-Link, VIERA Link or similar technology compatible recorder is connected, channel, language, country / region settings are automatically downloaded to the recorder.



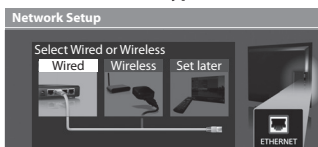
- If downloading has failed, you can download later through the Setup Menu. ➔ [Download] (p. 21)

Setup the network connection

Setup the network connection to enable the network service functions such as VIERA Connect, etc. (p. 13).

- To setup the wireless connection, the Wireless LAN Adaptor (optional accessory) is required. Please note that this TV does not support wireless public access points.
- Ensure the network connections (p. 8) and network environment are completed before starting setup.

Select the network type



[Wired] ➔ "Wired connection" (p. 8)

[Wireless] ➔ "Wireless connection" (p. 8)



- select
- access

- To setup later on or skip this step

➔ Select [Set later] or

■ [Wired]

1. Select [Auto]



- select
- access

2. Go to the next step **7**



(Press twice)

Connection Test

- Check network cable connection.
- Check acquired IP address.
- Check for devices using same IP address.
- Check gateway connection.
- Check server connection.

Automatically setup is done and the test of the network connection starts.

- To set manually, select [Manual] and set each item.

: **succeeded**

The test is successful and the TV is connected to the network.

: **failed**

Check the settings and connections. And then select [Retry].

■ [Wireless]

Select the connection type

Connection Type
Please select network connection type.

Search for access point
WPS(Push button)



[Search for access point]

Access points found automatically are listed.

1. Select your desired access point

Available Access Points

No.	SSID	Wireless type	Encrypt	Reception
1	Access Point A	11n(2.4GHz)	<input type="checkbox"/>	
2	Access Point B	11n(5GHz)	<input type="checkbox"/>	
3	Access Point C	11n(5GHz)	<input type="checkbox"/>	



: Encrypted access point

- To search access points again



- For the information of the highlighted access point



- To set manually



2. Enter the encryption key input mode

Encryption Key Setting
Connection will be made with the following settings:-
SSID : Access Point A
Authentication type : WPA-PSK
Encryption type : TKIP

Please input the encryption key.

Encryption key



- If the selected access point is not encrypted, the confirmation screen will be displayed. It is recommended to select the encrypted access point.

3. Enter the encryption key of the access point

Access Point Settings
Encryption key

A	B	C	D	E	F	G	H	I	J	K	L	M	N	O	P	Q	R	S	T
U	V	W	X	Y	Z	0	1	2	3	4	5	6	7	8	9	-	_	#	*
a	b	c	d	e	f	g	h	i	j	k	l	m	n	o	p	q	r	s	t
u	v	w	x	y	z	!	@	#	\$	%	&	'	()	*	+	=	-	.

Set characters



- You can set characters by using numeric buttons.



4. Select [Yes]

Access Point Settings
Encryption key is set to:-
XXXXXXXX

Select 'Yes' to confirm.
Select 'No' to change.

Yes No



- To re-enter the encryption key, select [No].
- If the connection has failed, check the encryption key, settings and positions of your access point. And then, follow the on screen instructions.

5. After the access point setting is finished, perform the connection test

→ **Connection Test**

- Check access point connection.
- Check acquired IP address.
- Check for devices using same IP address.
- Check gateway connection.
- Check server connection.

: **succeeded**

The test is successful and the TV is connected to the network.

: **failed**

Check the settings and connections. And then select [Retry].

- To set manually, select [Manual] and set each item.

6. Go to the next step **7**



[WPS(Push button)]

1. Press the WPS button on the access point until the light flashes
2. Connect the Wireless LAN Adaptor and the access point

WPS(Push button)

- 1) Please press the 'WPS' button on the access point until its light flashes.
- 2) When the light is flashing select 'Connect' on TV.

If you are unsure, please check the instruction manual of the access point.

Connect



- Ensure that your access point supports WPS for this setup.
- WPS : Wi-Fi Protected Setup™
- If the connection has failed, check the settings and positions of your access point. And then, follow the on screen instructions.

3. After the access point setting is finished, perform the connection test

**Connection Test**

- Check access point connection.
- Check acquired IP address.
- Check for devices using same IP address.
- Check gateway connection.
- Check server connection.

: **succeeded**

The test is successful and the TV is connected to the network.

: **failed**

Check the settings and connections. And then select [Retry].

- To set manually, select [Manual] and set each item.

4. Go to the next step **7**



(Press twice)

Select [Home]

Select [Home] viewing environment to use in your home environment.

Please select your viewing environment.

Home

Shop



- ① select
- ② set

■ **[Shop] viewing environment (for shop display only)**

[Shop] viewing environment is the demonstration mode to explain main features of this TV.

Select [Home] viewing environment to use in your home environment.

- You can return to viewing environment selection screen at the stage of Shop confirmation screen and Automatic Demo Off / On selection screen.

1 Return to viewing environment selection screen

Shop

You have selected shop mode

Automatic Demo

Off

On



2 Select [Home]

Please select your viewing environment.

Home

Shop



- ① select
- ② set

To change viewing environment later on, you will need to initialise all settings by accessing Shipping Condition.

➔ **[Shipping Condition] (p. 23)**

Auto Setup is now complete and your TV is ready for viewing.

If tuning has failed, check the connection of the satellite cable, RF cable, and then, follow the on screen instructions.

Note

- To retune all channels ➔ **[Auto Setup] (p. 21, 22)**
- To add the available TV mode later ➔ **[Add TV Signal] (p. 21, 22)**
- To initialise all settings ➔ **[Shipping Condition] (p. 23)**

Using "VIERA Connect"

VIERA Connect is a gateway to the internet services unique to Panasonic and has expanded VIERA CAST features greatly. VIERA Connect allows you to access some specific websites supported by Panasonic, and enjoy internet contents such as photos, videos, games, etc. from VIERA Connect home screen.

• This TV has no full browser function and all features of websites may not be available.



1 Turn power on



- Press for about 1 second
- Mains power On / Off switch should be On. (p. 6)



Every time you turn on the TV, VIERA Connect introduction banner appears. The banner is subject to change.

2 Access VIERA Connect

While the banner is displayed



or  

- The button design varies depending on the remote control.

Example :



- Depending on the usage conditions, it may take a while to read all the data.
 - Messages might be displayed before VIERA Connect home screen.
- Please read these instructions carefully and follow the on screen instructions.

Example : VIERA Connect home screen



- To go to the next level
➡ [MORE]
- To back to the previous level
➡ [BACK]

■ To exit from VIERA Connect



- To set the VIERA Connect instruction banner display off
➡ [VIERA Connect Banner] (p. 23)

How to Use VIERA TOOLS

You can access some special features easily by using the VIERA TOOLS function.



1 Display icons of the feature



2 Select a feature



■ To return to TV



3 Follow the operations of each feature

Viewing 3D images

You can enjoy viewing 3D images with contents or programmes corresponding to the 3D effect by wearing the 3D Eyewear. This TV supports [Frame Sequential]*1, [Side by Side]*2 and [Top and Bottom]*3 3D formats.

*1 : The 3D format that the images for the left and right eyes are recorded with the high definition quality and alternately played back

*2, *3 : Other available 3D formats

● How to view the 3D images ➔ (p. 15)

Caution

To enjoy 3D images safely and comfortably, please read these instructions fully.

Viewing 3D Content

- Do not use the 3D Eyewear if you have a history of over-sensitivity to light, heart problems, or have any other existing medical conditions.
- Please stop using the 3D Eyewear immediately, if you feel tired, are not feeling well or experience any other uncomfortable sensation.
- When you set the effect by using [3D Adjustment], take into account that the vision of 3D images varies among different individuals.
- Take an appropriate break after viewing a 3D movie.
- Take a break of between 30 - 60 minutes after viewing 3D content on interactive devices such as 3D games or computers.
- Be careful not to strike the TV screen or other people unintentionally. When using the 3D Eyewear the distance between the user and screen can be misjudged.
- The 3D Eyewear must only be worn when viewing 3D content.
- If you do not look toward the TV screen for a while when viewing 3D images, the 3D Eyewear may be turned off automatically.
- If you suffer from any eyesight problems (short / far-sighted, astigmatism, eyesight differences in left and right), please ensure to correct your vision before using the 3D Eyewear.
- Stop using the 3D Eyewear if you can clearly see double images when viewing 3D content.
- Do not use the 3D Eyewear at a distance less than the recommended distance.

The recommended viewing distance is at least 3 times of image height.

TX-L32DT35E : 1.2 m or more

TX-L37DT35E : 1.4 m or more

When the top and bottom area of the screen is blackened, such as movies, view the screen at a distance at least 3 times further than the height of the actual image. (That makes the distance closer than above recommended figure.)

3D Eyewear Use

- Pay special attention when children are using the 3D Eyewear.
3D Eyewear should not be used by children younger than about 5 - 6 years old, as a guideline. All children must be fully supervised by parents or guardians who must ensure their safety and health throughout the using 3D Eyewear.
- Before using the 3D Eyewear, ensure no breakable objects surrounding the user to avoid any accidental damage or injury.
- Remove the 3D Eyewear before moving around to avoid falling or accidental injury.
- Always store the 3D Eyewear in the case supplied with the 3D Eyewear when not in use.
- Use the 3D Eyewear only for the intended purpose and nothing else.
- Do not use 3D Eyewear in the condition of high temperature.
- Do not use if the 3D Eyewear is physically damaged.
- Do not use any devices that emit the infrared signals near the 3D Eyewear, as this may cause the 3D Eyewear false operations.
- Do not use devices (such as mobile phones or personal transceivers) that emit strong electromagnetic waves near the 3D Eyewear as this may cause the 3D Eyewear to malfunction.
- Do not expose the infra-red receiver section to bright light such as direct sunshine and fluorescent light. The 3D image may not be displayed correctly.
- Stop using the 3D Eyewear immediately if a malfunction or fault occurs.
- Stop using the 3D Eyewear immediately if you experience any redness, pain, or skin irritation around the nose or temples.
- In rare cases, the materials used in the 3D Eyewear may cause an allergic reaction.

To view the 3D images

You can enjoy the 3D images in a variety of ways.

(Frame Sequential, Side by Side and Top and Bottom are the supported 3D format.)

■ Playing back 3D-compatible Blu-ray disc (Frame Sequential format)

- Connect the 3D-compatible player via a fully wired HDMI compliant cable.
- If input mode is not switched automatically, select the input mode connected to the player.
- If you use the non 3D-compatible player, the images will be displayed on 2D mode.

■ 3D-supported broadcast

- Please consult the suppliers of contents or programmes for availability of this service.

■ 3D photos and 3D videos taken by 3D-compatible Panasonic products

- Available in Media Player and Network services

■ 2D images converted to 3D

Use a 2D-to-3D conversion function [2D→3D] mode in [3D Mode Selection]

1 Turn the 3D Eyewear on

2 Put on the 3D Eyewear

3 Watch the 3D images

- Safety precautions will be displayed when you first watch the 3D image. Select [Yes] or [No] to continue to view 3D images.

If you select [Yes], this message will be displayed again in the same condition after Mains power On / Off switch is next turned On. Select [No] if you do not wish to display this message again.

4 Turn off the 3D Eyewear after using it

Note

- 3D Eyewear is not included. Please purchase as necessary.
- For more detail about using and wearing the 3D Eyewear, please refer to the manual of the 3D Eyewear.

Changing 2D - 3D mode

You can easily change the viewing mode between 2D and 3D using the 3D button.



Select the mode



- Items of [3D Mode Selection] vary depending on the condition.

[3D] / [2D] / [2D→3D]:

Displays the appropriate image that you desire without selecting 3D format

- This mode may not work properly depending on the source image format. In this case, select the appropriate 3D format manually.

■ To change 3D format manually

When the image is not changed properly using [3D], [2D] or [2D→3D] mode, use this manual setting.

During the above operation



Select the mode

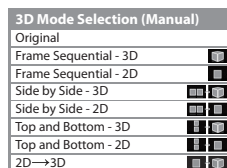


Table of images that can be seen for each [3D Mode Selection (Manual)] and the source image format

If the picture appears to be abnormal, refer to the table below to choose the correct 3D mode.

[3D Mode Selection] Source image format	[Original]	[Frame Sequential - 3D]	[Side by Side - 3D]	[Top and Bottom - 3D]	[2D→3D]
Frame Sequential		 Normal 3D*1			
Side by Side (Full)			 Normal 3D*1		
Side by Side			 Normal 3D*1		
Top and Bottom				 Normal 3D*1	
Normal format (2D)				 Normal 3D*1	 Normal 3D

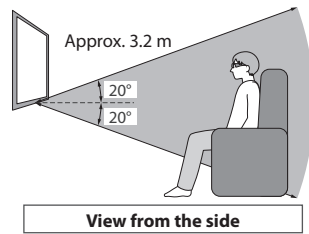
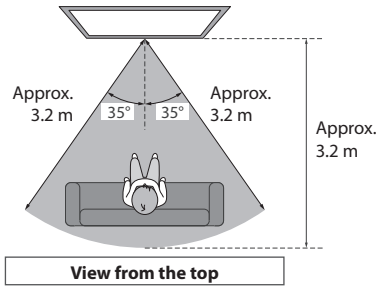
*1 : When selecting [Frame Sequential - 2D], [Side by Side - 2D] or [Top and Bottom - 2D], the images will be displayed without 3D effect.

• Depending on the player or broadcasts, the image may be different from the above illustrations.

Available range for the 3D Eyewear

If the 3D Eyewear is placed outside the coverage area for about 5 minutes, the 3D Eyewear will be turned off automatically.

● : Coverage area for using the 3D Eyewear



Note

- You cannot view the 3D images with the 3D Eyewear too far from the TV, because of the difficulty of receiving infrared signals from the TV.
- The range may be shortened depending on the obstacles between the infrared sensors on the TV and the 3D Eyewear, the dirt on the infrared sensors or the surrounding environment.
- If you do not look toward the TV screen for a while when viewing 3D images, the 3D Eyewear may be turned off automatically even if in the coverage area.

How to Use Menu Functions

Various menus allow you to make settings for the picture, sound, and other functions.

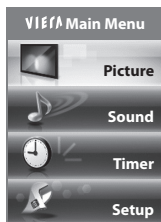


1 Display the menu

MENU • Displays the functions that can be set (varies according to the input signal)

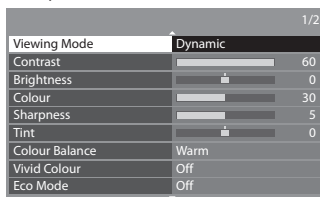
2 Select the menu

Example : [Picture Menu]



3 Select the item

Example : [Picture Menu]



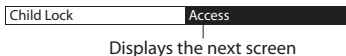
■ Choose from among alternatives



■ Adjust using the slide bar



■ Go to the next screen



Displays the next screen



■ Enter characters by free input menu

You can enter names or numbers freely for some items.



Set characters one by one



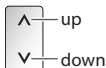
■ To return to TV at any time



■ To return to the previous screen



■ To change menu pages



• You can set characters by using numeric buttons.

■ To reset the settings

- To reset the picture settings only
 - ➔ **[Reset to Defaults] in the Picture Menu (p. 19)**
- To reset the sound settings only
 - ➔ **[Reset to Defaults] in the Sound Menu (p. 20)**
- To initialise all settings
 - ➔ **[Shipping Condition] in the Setup Menu (p. 23)**

Menu list

Menu	Item	Adjustments / Configurations (alternatives)
Picture	Viewing Mode	<p>Basic picture mode [Dynamic] / [Normal] / [Cinema] / [True Cinema] / [Game] / [Photo] / [Professional1] / [Professional2]</p> <p>In each Viewing Mode and input, [Contrast], [Brightness], [Colour], [Sharpness], [Tint], [Colour Balance], [Vivid Colour], [Eco Mode], [P-NR] and [3D-COMB] can be adjusted and stored to suit your particular viewing requirement.</p> <p>[Dynamic] : Provides enhanced picture contrast and sharpness when viewing in a bright room.</p> <p>[Normal] : Recommended for viewing under normal ambient room lighting conditions.</p> <p>[Cinema] : For watching movies in a darkened room with the improved performance of contrast, black and colour reproduction</p> <p>[True Cinema] : Precisely reproduces the original quality of the image without any revision.</p> <p>[Game] : Fast response signal specifically to provide suitable images for playing games</p> <p>[Photo] : Set [Reversal Film Effect] to [On] to provide the suitable image quality for photos</p> <p>[Professional1 / 2] : Allows you to set the professional picture settings in [Advanced Settings], [Lock Settings] and [Copy Adjustment]</p>
	Contrast, Brightness, Colour, Sharpness	Increases or decreases the levels of these options according to your personal preference
	Tint	With an NTSC signal source connected to the TV, the picture hue can be adjusted to suit your taste
	Colour Balance	Allows you to set the overall colour tone of the picture [Cool] / [Normal] / [Warm]
	Vivid Colour	Automatically adjusts colours to vivid ones [Off] / [On]
	Reversal Film Effect	Provides the picture effect such as the reversal film [Off] / [On]
	Eco Mode	Automatic Brightness Control function Adjusts picture settings automatically dependent on ambient lighting conditions [Off] / [On]
	P-NR	Picture Noise Reduction Automatically reduces unwanted picture noise and flicker noise in the contoured parts of a picture [Off] / [Min] / [Mid] / [Max]
	3D-COMB	Makes still or slow moving pictures look more vivid [Off] / [On]
	3D Settings	2D→3D Depth
3D Adjustment		Adjustment of the 3D effect (except in [2D→3D] mode) [Off] / [On] [Effect] : Adjust the 3D depth according to the contents or to your preference.
Picture Sequence		Select [Reverse] if you feel that the sense of depth is unusual (except in [2D→3D] mode) [Normal] / [Reverse]
Edge Smoother		Set to [On] if you feel the contoured parts of an image are not smooth enough (except in [2D→3D] mode) [Off] / [On]
3D Detection		Automatically detects the 3D format signals [Off] / [On] / [On (Advance)] [On (Advance)] : Detects the 3D format signals and displays the 3D image automatically. [On] : Detects the particular 3D format signals (Frame Sequential, etc.) and displays the 3D image automatically.

Picture	3D Settings	3D Signal Message	Selects whether to give a notification message when a signal of 3D format is found [Off] / [On]
		Safety Precautions	Displays the precautions for viewing 3D images
	Screen Display	Turns the screen off when you select [Off] [Off] / [On]	
	Area Dimmer Control	Automatically controls dark areas according to the images [Off] / [On]	
	Advanced Settings	Intelligent Frame Creation	Automatically compensates the picture frame rate and removes juddering movements to make the images smooth [Off] / [Mid] / [Max]
		24p Smooth Film	Automatically compensates the picture frame rate to make the 24p source movie images smooth [Off] / [Mid] / [Max]
		Film Cadence Detection	Automatically makes the film source movie images clear [Off] / [On]
		3D Refresh Rate	Reduces juddering and flicker noises of the 3D images when using the 3D Eyewear [Auto] / [100Hz] / [120Hz] [100Hz] : If the room is lit by fluorescent lights / dimmers (50 Hz) and light appears to flicker. [120Hz] : If the input signal is 50 Hz and flicker noises appear.
		Resolution Enhancer	Enhances the picture resolution to make the image sharper [Off] / [Mid] / [Max]
		16:9 Overscan	Selects the screen area displaying the image [Off] / [On] [On] : Enlarged the image to hide the edge of the image. [Off] : Displayed the image in the original size.
AV Colour System		Selects optional colour system based on video signals in AV mode [Auto] / [PAL] / [SECAM] / [M.NTSC] / [NTSC]	
DVI Input Setting		Changes the black level in the image for HDMI input mode with DVI input signal manually [Normal] / [Full]	
Reset to Defaults	Press the OK button to reset the present Picture Viewing Mode of the selected input to the default settings		
Sound	Mode	Selects the basic sound mode [Music] / [Speech] / [User] [Music] : Improves sound quality for watching music videos, etc. [Speech] : Improves sound quality for watching news, drama, etc. [User] : Adjusts the sounds manually by using the equaliser to suit your favourite sound quality.	
	Bass	Increases or decreases level to enhance or minimise lower, deeper sound output	
	Treble	Increases or decreases level to enhance or minimise sharper, higher sound output	
	Equaliser	Adjusts the frequency level to suit your favourite sound quality	
	Balance	Adjusts volume level of right and left speakers	
	Headphone Volume	Adjusts the volume of the headphones	

Sound	Surround	Surround sound settings [Off] / [V-Audio] / [V-Audio Surround] / [V-Audio ProSurround] [V-Audio] : Provides a dynamic enhancer of width to simulate improved spatial effects [V-Audio Surround] : Provides a dynamic enhancer of width and depth to simulate improved spatial effects [V-Audio ProSurround] : Provides a more progressive enhancer and reverberation to simulate improved spatial effects	
	Auto Gain Control	Adjusts the current volume level if it is extremely different from the previous viewed channel or input mode [Off] / [On]	
	Volume Correction	Adjusts the volume of individual channel or input mode	
	Speaker Distance to Wall	Adjusts the low frequency sound [Over 30cm] / [Up to 30cm]	
	MPX	Selects multiplex sound mode (if available) [Stereo] : Use this normally [Mono] : When stereo signal cannot be received [M1] / [M2] : Available while mono signal is transmitted	
	Audio Preference	Selects the initial setting for audio tracks [Auto] / [Multichannel] / [Stereo] / [MPEG] [Auto] : Automatically selects the audio tracks if programme has more than two tracks. The priority is given in the following order - Dolby Digital Plus, HE-AAC, Dolby Digital, MPEG. [Multichannel] : The priority is given to multi-channel audio track. [Stereo] : The priority is given to stereo (2ch) audio track. [MPEG] : The priority is given to MPEG.	
	SPDIF Selection	SPDIF : A standard audio transfer file format Selects the initial setting for digital audio output signal from DIGITAL AUDIO OUT and HDMI2 (ARC function) terminals [Auto] / [PCM] [Auto] : Dolby Digital Plus, Dolby Digital and HE-AAC (48 kHz) multi-channel are output as Dolby Digital Bitstream. MPEG is output as PCM. [PCM] : Digital output signal is fixed to PCM.	
	HDMI1 / 2 / 3 / 4 Input	Select to fit the input signal [Digital] / [Analogue] [Digital] : HDMI cable connection [Analogue] : HDMI-DVI adaptor cable connection	
	SPDIF Delay	Adjusts the delay time of the sound output from DIGITAL AUDIO OUT and HDMI2 (ARC function) terminals if the sound does not synchronize the image	
Reset to Defaults	Press the OK button to reset the present Sound Mode, [Balance], [Headphone Volume] and [Surround] to the default settings		
Timer	Timer Programming	Sets a timer to remind watching or record forthcoming programmes	
	Off Timer	Sets the time until the TV automatically goes to Standby mode [Off] / [15] / [30] / [45] / [60] / [75] / [90] (minutes)	
	Auto Standby	Sets the time the TV automatically goes to Standby mode when no operation is performed for the selected times [Off] / [2] / [4] (hours)	
Setup	Eco Navigation	Automatically sets the TV to the most suitable energy-saving mode	
	Recording Setup	Formats the connected USB HDD and sets the condition	
	Link Settings	VIERA Link	Sets to use VIERA Link functions [Off] / [On]
		HDMI Content Type	Adjusts the picture settings according to the content type signal from the connected equipment via HDMI cable [Off] / [Auto]
AV1 out		Chooses the signal to be transmitted from the TV to Q-Link [TV] / [AV2] / [Monitor] [Monitor] : Image displayed on screen	

Link Settings	Power on Link	Sets to use Power on Link function [Off] / [On]
	Power off Link	Sets to use Power off Link function [Off] / [On]
	Standby Power Save	Controls the power consumption in Standby mode of the connected equipment to reduce the consumption [Off] / [On]
	Intelligent Auto Standby	Makes non-watched or non-used connected equipment go into Standby mode to reduce the power consumption [Off] / [On (With reminder)] / [On (No reminder)]
	Download	Downloads channel, language, country / region settings to a Q-Link or VIERA Link compatible equipment connected to the TV
Child Lock		Locks a channel / AV input to prevent access to it
DVB-S Tuning Menu	Favourites Edit	Creates list of favourite DVB-S channels
	Channel List	Skips the unwanted DVB-S channels or edits DVB-S channels
	Auto Setup	Automatically sets the DVB-S channels received in the area
	Manual Tuning	Sets the DVB-S channels manually
	Update Channel List	Updates DVB-S Channel List while keeping your settings
	New Channel Message	Selects whether to give a notification message when a new DVB-S channel is found [Off] / [On]
	Signal Condition	Checks the DVB-S signal condition
	Antenna System	Sets the antenna system to use plural LNBs for receiving several satellites [One LNB] / [MiniDiSEq] / [DiSEq 1.0] / [Single Cable]
	LNB Configuration	Selects the satellite for each LNB
Add TV Signal	Adds the TV mode	
DVB-C Tuning Menu	Favourites Edit	Creates list of favourite DVB-C channels
	Channel List	Skips the unwanted DVB-C channels or edits DVB-C channels
	Auto Setup	Automatically sets the DVB-C channels supplied
	Manual Tuning	Sets the DVB-C channels manually
	Update Channel List	Updates DVB-C Channel List while keeping your settings
	Favourite Network	Selects your favourite network for each broadcasters (only available in some countries)
	New Channel Message	Selects whether to give a notification message when a new DVB-C channel is found [Off] / [On]
	Service Replacement	Set to [On] to enable a message to switch to the available service (only available in some countries) [Off] / [On]
	Signal Condition	Checks the DVB-C signal condition
	Attenuator	Automatically reduces the DVB-C signal to avoid the interference [Off] / [On]
Add TV Signal	Adds the TV mode	

Setup

DVB-T Tuning Menu	Favourites Edit	Creates list of favourite DVB-T channels
	Channel List	Skips the unwanted DVB-T channels or edits DVB-T channels
	Auto Setup	Automatically sets the DVB-T channels received in the area
	Manual Tuning	Sets the DVB-T channels manually
	Update Channel List	Updates DVB-T Channel List while keeping your settings
	Favourite Network	Selects your favourite network for each broadcasters (only available in some countries)
	New Channel Message	Selects whether to give a notification message when a new DVB-T channel is found [Off] / [On]
	Signal Condition	Checks the DVB-T signal condition
	Add TV Signal	Adds the TV mode
Analogue Tuning Menu	Channel List	Skips the unwanted Analogue channels or edits Analogue channels
	Auto Setup	Automatically sets the Analogue channels received in the area
	Manual Tuning	Sets the Analogue channels manually
	Add TV Signal	Adds the TV mode
Language	OSD Language	Changes language for on screen displays
	Preferred Audio 1 / 2	Selects the first and second preferred language for DVB multi audio (depending on the broadcaster)
	Preferred Subtitles 1 / 2	Selects the first and second preferred language for DVB subtitles (depending on the broadcaster)
	Preferred Teletext	Selects the preferred language for DVB teletext service (depending on the broadcaster)
Display Settings	Preferred Subtitle Type	Selects the preferred subtitle type [Standard] / [Hard of Hearing]
	Teletext	Teletext display mode [TOP (FLOF)] / [List]
	Teletext Character Set	Selects teletext language font [West] / [East1] / [East2] [West] : English, French, German, Greek, Italian, Spanish, Swedish, Turkish, etc. [East1] : Czech, English, Estonian, Lettish, Rumanian, Russian, Ukrainian, etc. [East2] : Czech, Hungarian, Lettish, Polish, Rumanian, etc.
	Default Guide	Selects the default TV Guide type when the GUIDE button is pressed (only available in some countries) [Channel List] / [TV Guide] [TV Guide] : Electronic Programme Guide (EPG) is available. [Channel List] : EPG is not available and the channel list will appear instead of it.
	Input Labels	Labels or skips each input terminal
	Banner Display Timeout	Sets how long the Information banner stays on screen [0 (No display)] / [1] / [2] / [3] / [4] / [5] / [6] / [7] / [8] / [9] / [10] (seconds)

Setup	Display Settings	VIERA Connect Banner		Sets the VIERA Connect introduction banner display [Off] / [On]	
		Playing Time Display		Set to [On] to display a continuous record of time spent using Game mode every 30 minutes [Off] / [On]	
		MHP Auto Start		Sets to [On] to start MHP application automatically (depending on the selected country and broadcaster) [Off] / [On]	
		Radio Mode		Sets the timer for turning off the screen automatically when a radio channel is selected [Off] / [5] / [10] / [15] / [20] (seconds)	
	Common Interface		Uses include to watch encrypted channels		
	Network Setup		Sets the network setting to use in your network environment		
	DivX® VOD		Displays DivX VOD registration code		
	Advance(isfcc)		Enables the advanced picture settings [Off] / [On]		
	System Menu	USB Keyboard Layout		Selects the language that your USB Keyboard supports	
		Shipping Condition		Resets all settings, for example, when moving house	
		System Update		Downloads new software to this TV	
		Licence Menu	Software Licence		Displays the software licence information
			Java Logo		Displays the Java logo
		System Information		Displays the system information of this TV	
	Other Settings	GUIDE Plus+ Settings	Update		Performs the update of the GUIDE Plus+ schedule and advertising information for the GUIDE Plus+ system
			Postcode		Sets your postcode to display advertisements in the GUIDE Plus+ system
			System Information		Displays the system information of the GUIDE Plus+ system
		Power on Preference		Automatically selects the input when the TV is turned on [TV] / [AV] Set to [TV] to view picture from TV tuner. Set to [AV] to view input from an external equipment connected to the AV1 or HDMI1 terminal, e.g. set top box.	
		USB Charge in Standby		Enables to supply the power from the USB port in Standby mode [Off] / [On]	
		Power Save		Reduces brightness of picture to economise on power consumption [Off] / [On]	
		Time Zone		Adjusts the time data	
		Exchange Channel List		Exports / Imports DVB-S Channel List settings using the SD Card to share the same settings with VIERA which has the same function	

- Menu items and selectable options vary depending on the current input signal, setting and mode.
- A different menu will be displayed when [Advance(isfcc)] in the Setup Menu is set to **[On]** or in the mode of PC input, Media Player or network service operations.
- Only available items can be selected.

Information for Users on Collection and Disposal of Old Equipment and used Batteries



These symbols on the products, packaging, and/or accompanying documents mean that used electrical and electronic products and batteries should not be mixed with general household waste. For proper treatment, recovery and recycling of old products and used batteries, please take them to applicable collection points, in accordance with your national legislation and the Directives 2002/96/EC and 2006/66/EC.

By disposing of these products and batteries correctly, you will help to save valuable resources and prevent any potential negative effects on human health and the environment which could otherwise arise from inappropriate waste handling.

For more information about collection and recycling of old products and batteries, please contact your local municipality, your waste disposal service or the point of sale where you purchased the items.

Penalties may be applicable for incorrect disposal of this waste, in accordance with national legislation.

For business users in the European Union

If you wish to discard electrical and electronic equipment, please contact your dealer or supplier for further information.

[Information on Disposal in other Countries outside the European Union]

These symbols are only valid in the European Union. If you wish to discard these items, please contact your local authorities or dealer and ask for the correct method of disposal.

Note for the battery symbol (bottom two symbol examples) :

This symbol might be used in combination with a chemical symbol. In this case it complies with the requirement set by the Directive for the chemical involved.



Cd

Specifications

	TX-L32DT35E	TX-L37DT35E
Power Source	AC 220-240 V, 50 / 60 Hz	
Rated Power Consumption	118 W	136 W
Standby Power Consumption	0.30 W	
	31.00 W (With monitor out recording)	

- This equipment complies with the EMC standards listed below.
EN55013, EN61000-3-2, EN61000-3-3, EN55020, EN55022, EN55024

Notice for DVB / Data broadcasting / IPTV functions

- This TV is designed to meet the standards (as of August, 2010) of DVB-T (MPEG2 and MPEG4-AVC(H.264)) digital terrestrial services, DVB-C (MPEG2 and MPEG4-AVC(H.264)) digital cable services and DVB-S (MPEG2 and MPEG4-AVC(H.264)) digital satellite services.

Consult your local dealer for availability of DVB-T or DVB-S services in your area.

Consult your cable service provider for availability of DVB-C services with this TV.

- This TV may not work correctly with the signal which does not meet the standards of DVB-T, DVB-C or DVB-S.
- Not all the features are available depending on the country, area, broadcaster, service provider and satellite.
- Not all CI modules work properly with this TV. Consult your service provider about the available CI module.
- This TV may not work correctly with CI module that is not approved by the service provider.
- Additional fees may be charged depending on the service provider.
- The compatibility with future services is not guaranteed.
- Check the latest information on the available services at the following website. (English only)

<http://panasonic.jp/support/global/cs/tv/>

Panasonic Corporation

Web Site : <http://panasonic.net>

M0311-1051