




LCD TELEVISION INSTRUCTION MANUAL

DLT-26H1
DLT-32H1



Caution

	CAUTION RISK OF ELECTRIC SHOCK DO NOT OPEN	
CAUTION: TO REDUCE THE RISK OF ELECTRIC SHOCK, DO NOT REMOVE COVER(OR BACK). NO USER-SERVICEABLE PARTS INSIDE. REFER SERVICING TO QUALIFIED SERVICE PERSONNEL.		



The lightning flash with arrowhead symbol, within an equilateral triangle, is intended to alert the user to the presence of uninsulated “dangerous voltage” within the product’s enclosure that may be of sufficient magnitude to constitute a risk electric shock.



The exclamation point within an equilateral triangle is intended to alert the user to the presence of important operating and servicing instructions in the literature accompanying the appliance.

WARNING: TO REDUCE THE RISK OF FIRE OR ELECTRIC SHOCK HAZARD, DO NOT EXPOSE THIS APPLIANCE TO RAIN OR MOISTURE.

CAUTION: TO PREVENT ELECTRIC SHOCK, MATCH WIDE BLADE OF PLUG TO WIDE SLOT, FULLY INSERT.



Disposal of Used Electrical & Electronic Equipment

The meaning of the symbol on the product, its accessory or packaging indicates that this product shall not be treated as household waste. Please, dispose of this equipment at your applicable collection point for the recycling of electrical & electronic equipments waste. In the European Union and Other European countries which there are separate collection systems for used electrical and electronic product. By ensuring the correct disposal of this product, you will help prevent potentially hazardous to the environment and to human health, which could otherwise be caused by unsuitable waste handling of this product. The recycling of materials will help conserve natural resources. Please do not therefore dispose of your old electrical and electronic equipment with your household waste. For more detailed information about recycling of this product, please contact your local city office, your household waste disposal service or the shop where you purchased the product.

Important Safeguards

Please read the following safeguards for your TV and retain for future reference. Always follow all warnings and instructions marked on the television.

1. Read Retain Follow All Instructions

Read all safety and operating the TV. Retain them safely for future reference. Follow all operations and instructions accordingly.

2. Heed Warnings

Adhere to all warnings on the appliance and in the operating instructions.



3. Cleaning

Unplug the TV from the wall outlet before cleaning. Do not use liquid, abrasive, or aerosol cleaners. Cleaners can permanently damage the cabinet and screen. Use a lightly dampened cloth for cleaning.

4. Attachments and Equipment

Never add any attachment and/or equipment without approval of the manufacturer as such additions may result in the risk of fire, electric shock or other personal injury.



5. Water and Moisture

The apparatus shall not be exposed to dripping or splashing and that no objects fill with liquids, such as vases, shall be placed on the apparatus.



6. Setting

Do not place this TV on an unstable cart, stand or table. Placing the TV on an unstable base can cause the TV to fall, resulting in serious personal injuries as well as damage to the TV. Use only a cart, stand, bracket or table recommended by the manufacturer or salesperson.

7. Ventilation

Slots and openings in the cabinet are provided for ventilation and to ensure reliable operation of the TV and to protect it from overheating. Do not cover the ventilation openings in the cabinet and never place the set in a confined space such as built-in cabinet unless proper ventilation is provided. Leave a minimum 10 cm gap all around the unit.

8. Power Source

This TV should be operated only from the type of power source indicated on the marking label. If you are not sure of the type of power supplied to your home, consult your appliance dealer or local power company.

9. Grounding or Polarization

This TV is equipped with a polarized alternating current line plug (a plug having one blade wider than the other). This plug will fit into the power outlet only one way. This is a safety feature. If you are unable to insert the plug fully into the outlet, try reversing the plug. If the plug should still fail to fit, contact your electrician to replace your obsolete outlet. Do not defeat the safety purpose of the polarized plug. A warning that an apparatus with CLASS I construction shall be connected to a MAINS socket outlet with a protective earthing connection.

10. Power-Cord Protection

Power-supply cords should be routed so that they are not likely to be walked on or pinched by items placed upon or against them, paying particular attention to cords at plug, wall outlets, and the point where they exit from the TV. MAIN plug is used as the disconnect device, the disconnect device shall remain readily operable.

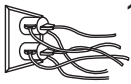
11. Lightning

For added protection for this TV during a lightning storm, or when it is left unattended and unused for long periods of time, unplug it from the wall outlet and disconnect the antenna or cable system. This will prevent damage to the TV due to lightning and power-line surge.

Important Safeguards

12. Power Lines

An outside antenna system should not be located in the vicinity of overhead power lines or other electric light or power circuits, or where it can fall into such power lines or circuits. Where installing an outside antenna system, extreme care should be taken to keep from touching such power lines or circuits as contact with them might be fatal.



13. Overloading

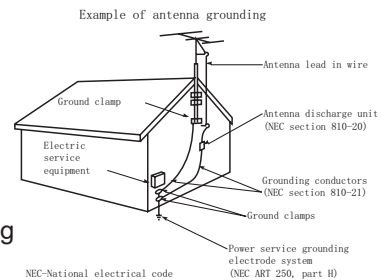
Do not overload wall outlets and extension cords as this can result in a risk of fire or electric shock.

14. Object and Liquid Entry

Never push objects of any kind into this TV through openings as they may touch dangerous voltage points or short-out parts that could result in fire or electric shock. Never spill liquid of any kind on or into the TV.

15. Outdoor Antenna Grounding

If an outside antenna or cable system is connected to the TV, be sure the antenna or cable system is grounded so as to provide some protection against voltage surges and built-up static charges. Section 810 of the National Electric Code, ANSI/NFPA No. 70-1984, provides information with respect to proper grounding of the mast and supporting structure, grounding of the lead in wire to an antenna discharge unit, connection to grounding electrodes, and requirements for the grounding electrode.



16. Servicing

Do not attempt to service this TV yourself as opening or removing covers may expose you to dangerous voltage or other hazards. Refer all servicing to qualified service personnel.

17. Damage Requiring Service

Unplug the TV from the wall outlet and refer servicing to qualified service personnel under the following conditions:

- When the power - supply cord or plug is damaged.
- If liquid has been spilled, or objects have fallen into the TV.
- If the TV has been exposed to rain or water.
- If the TV does not operate normally by following the operating instructions. Adjust only those controls that are covered by the operating instructions as an improper adjustment of other controls may result in damage and will often require extensive work by a qualified technician to restore the TV to its normal operation.
- If the TV has been dropped or the cabinet has been damaged.
- When the TV exhibits a distinct change in performance - this indicates a need for service.

18. Replacement Parts

When replacement parts are required, be sure the service technician has used replacement parts specified by the manufacturer or have the same characteristics as the original part. Unauthorized substitutions may result in fire, electric shock or other hazards.

19. Safety Check

Upon completion of any service or repair to the TV, ask the service technician to perform safety checks to determine that the TV is in safe operating condition.



20. Heat

The product should be situated away from heat sources such as radiators, heat registers, stoves, or other products (including amplifiers) that produce heat.

Warning

This section must be read carefully and followed by the user prior to the operation of the product. The manual states important instructions for the user's own safety, and the proper operation of the product.

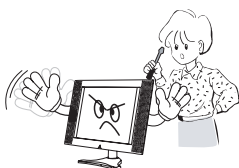


Warning

Ignoring or disregarding the contents of this section and improper operation of the product may result in the person's death or serious injury.

In case of an accident, please unplug the unit from the outlet immediately.

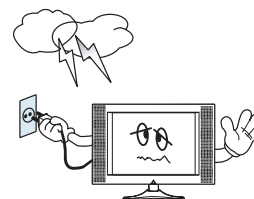
To reduce the risk of electric shock, do not remove cover or back. No user-serviceable parts inside. Refer to qualified service personnel for repair.



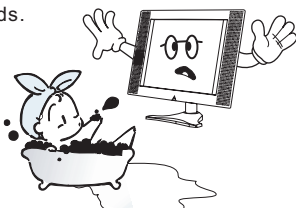
Do not put any object that contains water, such as flowerpot, near to the unit. The water may penetrate into the unit, and be a cause of fire or hazardous electric shock.



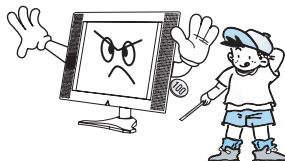
To prevent fire and damages to the product, unplug the unit from the outlet during lightning storm, or when it is left unattended and unused for a long period of time.



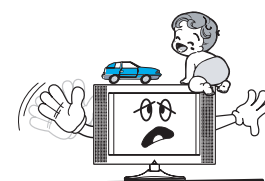
Do not put on or use the product near water and moisture, such as in a bathroom, washbowl, etc. It may be a cause of fire and electric shock hazards.



Slots and openings in the case are provided for ventilation to ensure reliable operation of the product. Never put in any item, such as a coin, paper, match, through these openings since it may touch dangerous voltage points that could result in fire or shock hazard.



Do not let children hang on or climb on the product since it may be a cause of serious injury.



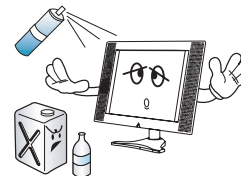
Hold the plug when unplugging the unit from the outlet. The cord may cause fire or electric shock if damaged.



Do not cause the product to lean or put it in an unstable place since it may cause a serious injury to a person, as well as damage to the product if it falls.



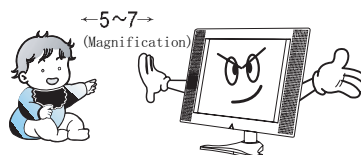
Do not put volatile substance, such as benzene, naphtha, near the product since it may cause a change in the product's colour.



Do not spill water or drop the remote controller since it may be a cause of malfunctioning.



Do not view the TV too closely since it may cause damage in your eyesight.



Refer servicing to qualified service personnel for cleaning at least once a year since dust inside the TV set may be a result of fire and malfunctioning of the product.



Warning

This section must be read carefully and followed by the user prior to the operation of the product. The manual states important instructions for the user's own safety, and the proper operation of the product.

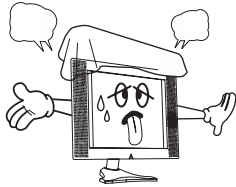


Warning

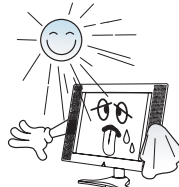
Ignoring or disregarding the contents of this section and improper operation of the product may result in the person's death or serious injury.

Please keep the user's manual in a safe place for future reference.

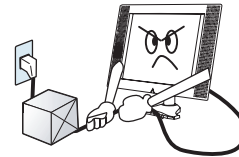
Do not cover the top of the television set. Ventilation will be prevented, and it may be a cause of fire if the product is internally overheated.



The product should be situated away from any heat source—such as radiators, heat registers, stoves, or other products that produce heat.



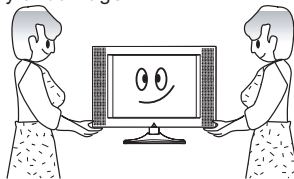
Do not put on any heavy item on the power cord since it may result in fire or hazardous electric shock if the cord is damaged.



Please be advised of electric wires and cables when installing the antenna. It may be a cause of hazardous electric shock and fire if the antenna touches or falls on the electric wire; thus, it must be installed firmly, and far away from the cable.



Unplug the power from the outlet and all the related connections from the unit to prevent electric shock. At least two people must work together to move the TV set when transporting to prevent the TV from falling, and consequently, any serious injury or damage.



Do not touch the power cord with moisturized or wet hands when plugging to or unplugging from the outlet since it may be a cause of electric shock.



Do not expose the product to a dusty or moisturized place since it may be a cause of malfunctioning.

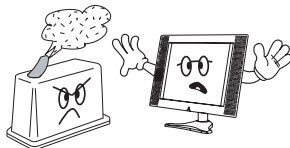


Table of Contents

WELCOME TO THE PERFECT VIEW WORLD OF LCD CLOUR TV

Dear Customer,

Thank you for choosing this LCD colour TV. We hope our product and service will exceed your expectations. This manual will guide you to set up and operate your TV as quickly as possible.

Please be sure to read all the safety and operating instructions carefully first.

SAFETY CLASS

This is an IEC safety class I product and must be grounded for safety.

Contents

Preparation for using your new TV	7
Selecting a location for your TV	7
Learning about your TV	7
Connecting your TV	9
Connecting to A/V equipments	9
Connecting to a computer	10
Connecting to an antenna	10
Using the remote control	11
Preparing the remote control for use	11
Learning about the remote control	12
Using the TV features	13
Understanding the TV features	13
Menu language setting	13
Basic operations	14
Using the Channel menu	15
Using the Picture menu	16
Using the Sound menu	17
Using the Function menu	18
Using the Screen menu	19
Using the Parental Control menu	20
Teletext operations	20
Appendix	22
The SCART interface	22
Cleaning and care	23
The installation of the pedestal	24
Specifications	25

Design and specifications are subject to change without notice.

Preparation for using your new TV

Selecting a location for your TV

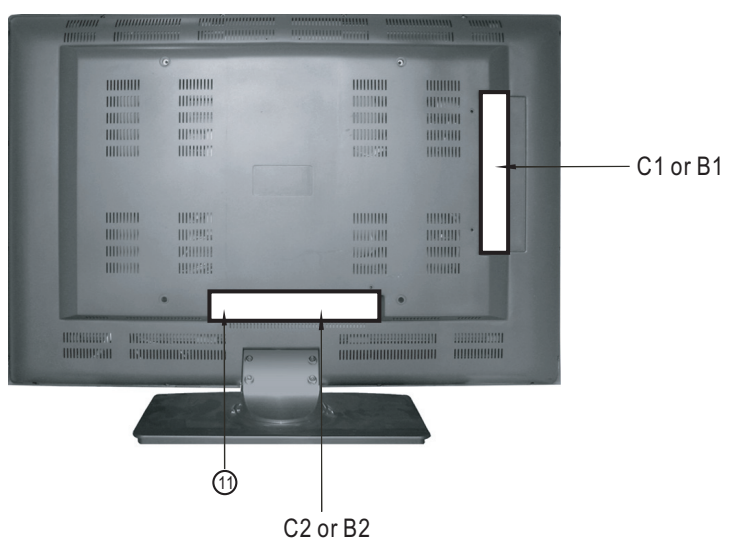
- 1) Place the TV on the floor or on a sturdy platform where light does not directly hit the screen.
- 2) Place the TV far enough from the walls to allow proper ventilation. Inadequate ventilation may cause overheating which may damage the TV.

Note: Please contact local dealer for wall mounting.

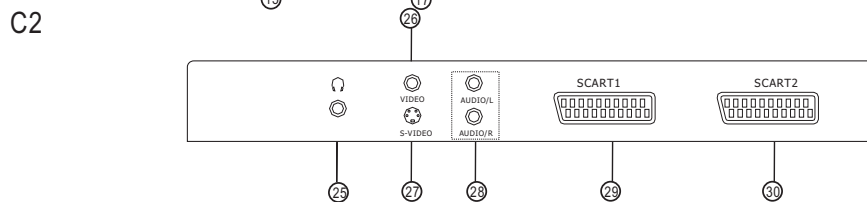
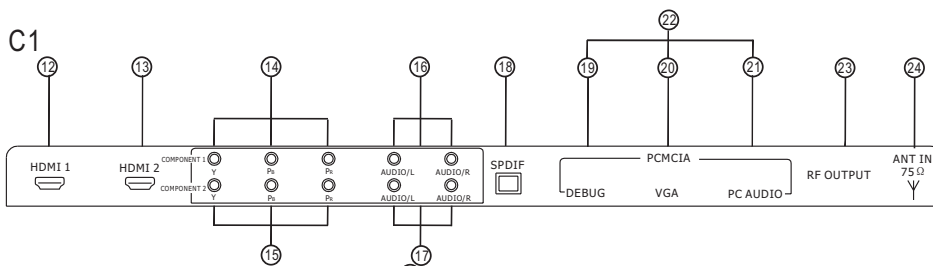
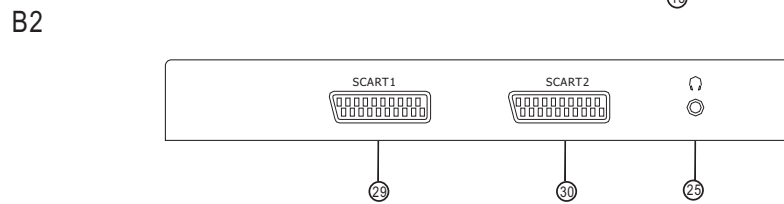
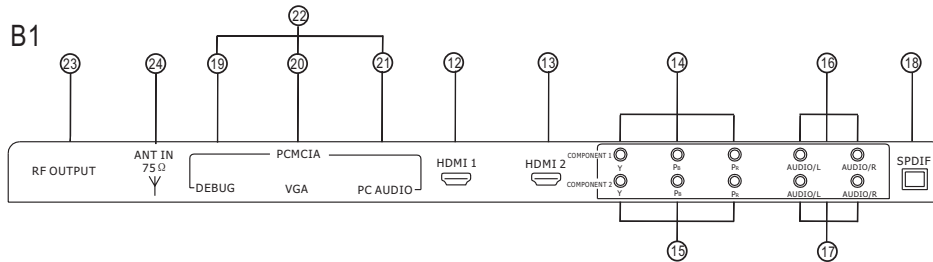
Learning about your TV

You can operate your TV by using the buttons on the front panel or the remote control. The terminals on the back panel provide all the connections you will need to connect other equipments to your TV.

Front Controls



Preparation for using your new TV



- | | | |
|-----------------------------|--------------------------------|----------------------------------|
| ① Power switch(on/off) | ⑪ AC power socket | ⑳ PC audio |
| ② Remote sensing window | ⑫ HDMI1 input | ㉑ PCMCIA socket |
| ③ Power indicator | ⑬ HDMI2 input | ㉒ RF output |
| ④ Menu button | ⑭ YPbPr input 1 | ㉓ RF input |
| ⑤ Source select | ⑮ YPbPr input 2 | ㉔ Headphone output |
| ⑥ Volume up / cursor right | ⑯ Audio in1(for YPbPr1) | ㉕ Video input |
| ⑦ Volume down / cursor left | ⑰ Audio in2(for YPbPr2) | ㉖ S-Video input |
| ⑧ Program up/cursor up | ⑱ SPDIF output | ㉗ Audio in(for Video or S-video) |
| ⑨ Program down/cursor down | ㉑ Debug(for software updating) | ㉘ SCART1 connector |
| ⑩ Power button (standby) | ㉒ VGA input | ㉙ SCART2 connector |

Note:

- The above figures are for reference only, please refer to the actual units to determine their appearance.
- Terminal of DLT-26H1 is constitutive of B1 and B2, Terminal of DLT-32H1 is constitutive of C1 and C2 ,

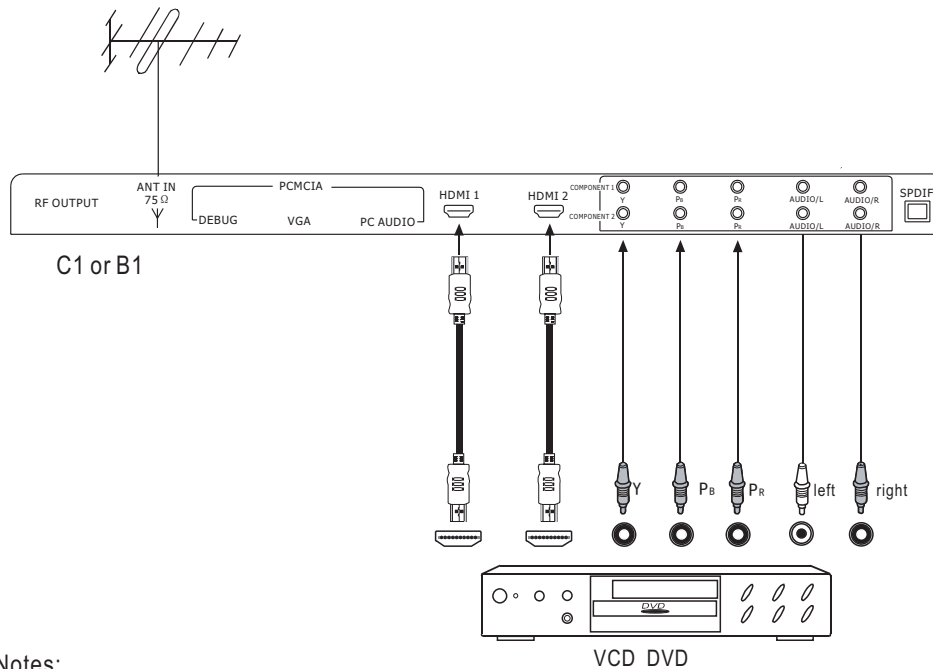
Preparation for using your new TV

Connecting your TV

Caution: Do not plug the TV in until you have finished connecting all of the equipments you need.

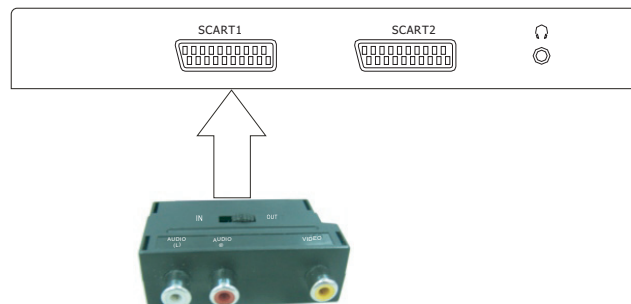
Connecting to A/V equipments

To enjoy its multimedia features, you can connect your TV to A/V equipments such as VCD, DVD, STB, Satellite receiver, Camcorder etc., and select signal source by using your remote control. Connect the devices as shown below.



Notes:

The YPbPr mode of the input signal can be the following format: 480P/60Hz, 480I/60Hz, 576P/50Hz, 576I/50Hz, 720P/60Hz, 1080I/50Hz, 1080I/60Hz.

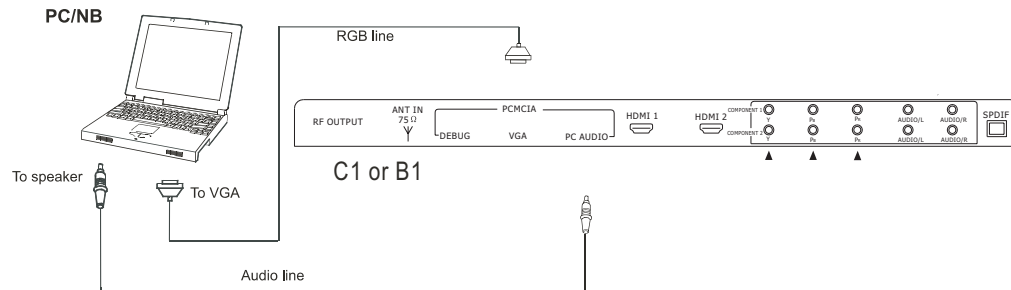


2. The 26" TV has not the AV input, if you want to use AV input, there is the SCART-AV terminal for you, you should insert this terminal to the SCART interface of TV, when you toggle the switch of the terminal to IN, you can use the terminal as AV input, or else, you can use the terminal as AV output.

Preparation for using your new TV

Connecting to a computer

You can use your TV as a monitor/speakers for your computer by connecting the computer through its 15 pin standard RGB interface and audio in1 interface. Connect the devices as shown below.

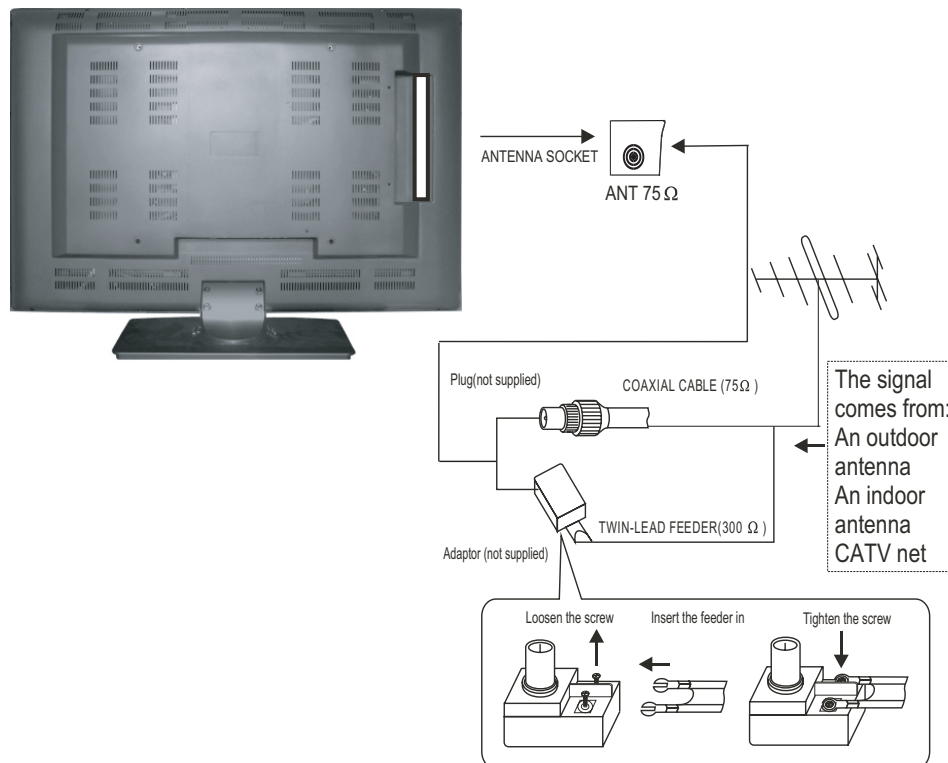


Note:

PC mode support resolution: VGA, SVGA, XGA.

Connecting to an antenna

To enjoy the terrestrial signal transmitted by your local TV station, you need an indoor or outdoor antenna (not supplied). Perfect picture quality requires a good signal and generally means that a good antenna must be used. The exact type and location of the antenna will depend on your particular area. Consult your local dealer or service personnel for best advice. If you are a subscriber of your local CATV net, the indoor or outdoor antenna is not needed. Connect the equipments as the following figure.



Note:

When you use the antenna, you should refer to the antenna power introduction.

Preparation for using your new TV

Using the remote control

Preparing the remote control for use

Installing the remote control batteries

1) Open the battery cover on the back of the remote control.



2) Install two AAA size(1.5V) batteries. Match the + and - signs on the batteries to the signs on the battery compartment.

3) Close the battery cover.

Note:

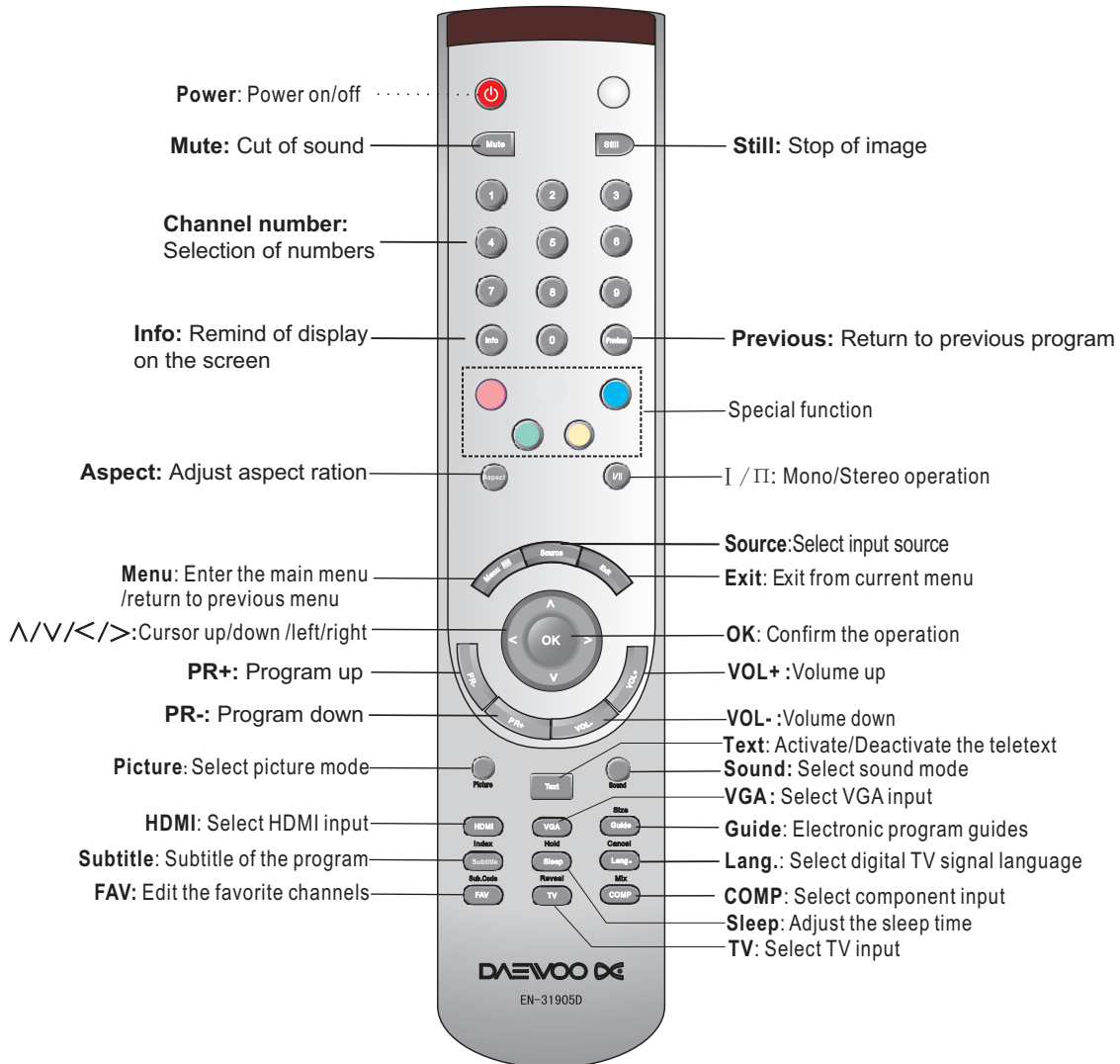
- 1.Dispose of your batteries in a designated disposal area. Do not throw the batteries into fire.
- 2.Do not mix battery types or combine used batteries with new ones.
- 3.Remove dead batteries immediately to prevent battery acid from leaking into the battery compartment.
- 4.If you do not intend to use the remote control for a long time, remove the batteries.
- 5.The effective range of remote control is suggested in the figure.



Preparation for using your new TV

Using the remote control

Learning about the remote control



Note:

1. Please refer to the practicality.
2. The marks beyond some buttons indicate its different use in different mode.
3. Red/Green/Yellow/Cyan buttons are used for special function.

Using the TV features

Using the TV features

Understanding the TV features

- Multimedia - TV receiver, Video monitor and PC display, all in one.
- Wider viewing angle, 16:9 display - 176° viewing angle at typical value
- Digital display device - truthfully reproducing the images, without distortion or blurring, irrespective of magnetic or geomagnetic effect.
- Sleep timer
- Teletext with 1000 pages memory
- Stereo
- Dual SCART interface
- Multi-language OSD
- Digital Terrestrial television with the ability to descramble
- HDMI interface

Menu language setting

When you start using your TV for the first time, this menu will be displayed on the screen as shown on the right.

- 1) Press the [**∧** or **∨**] button to select the **OSD language** of the **Startup** Menu.
- 2) Press the [**>** or **OK**] button to enter **OSD language** sub-menu.
- 3) Press the [**∧** or **∨**] button to select the language that you want to use and press [**OK**] to confirm.
- 4) You can also set other items similarly.



Note:

The menu is only displayed once when you turn on the TV. If you want to select this menu, please follow the instructions below:

- 1) Press the [**Menu**] button to enter the main menu.
- 2) Press the [**∧** or **∨**] button to select the item **Function**.
- 3) Press the [**>** or **OK**] button to enter the **Function** sub-menu.
- 4) Press the [**∧** or **∨**] button to select the **Start up** Menu.
- 5) Press the [**<** or **>**] button to select the **Off/On**.
- 6) When you select the **On**, you can select the Menu Language after you restart your TV.

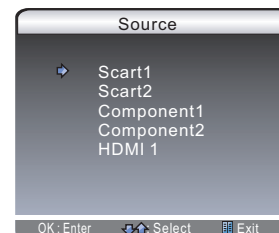
Using the TV features

Using the TV features

Basic operations

Power ON/OFF

- 1) Connect the TV to power outlet and turn on the AC power switch. If the power indicator is red, it means that the TV is off. You need to press the Power button on the front control or on the remote control to turn on the TV, then the power indicator will get blue. Several seconds later, TV picture will be displayed on the screen.
- 2) Press the power button on the front control or on the remote control to turn off the TV temporarily.



Note:

If you decide to shut off the TV for a long period of time, it is recommended that you remove the power plug from the outlet. After turning off the TV, you must wait for at least five seconds to turn on the TV again.

Signal source selection

Press [TV] button to select TV input; press the [Source] and [^ or v] and [> or OK] buttons to select input source.

Select channels by [PR+ or PR-]

You can also use [PR+ or PR-] to select channels. [PR+] indicates channel number increase; [PR-] indicates channel number decrease.

Select channels by numbers

To select a channel: Press the channel numbers in series to select channel directly. For example, to select channel 120, Press the button 1, and 1 will be displayed on the top right corner of the screen, then press the button 2, 12 will be displayed, press the button 0, you can enjoy the program of channel 120.

Adjust volume

When menu is not on the screen, press [VOL- or VOL+] to adjust the volume.

Use [Previous] button

Press [Previous] button repeatedly to alternate between the present channel and the previous channel.

Display program information

Press [Info] button to display the present channel information, but it will also disappear 5 seconds after your pressing.

TV and DTV information

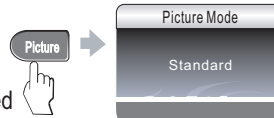
1. This model cannot switch between DVB-T and Analog.
2. From Ch.1 is DVB-T and from Ch.901 is Analog.

Using the TV features

Using the TV features

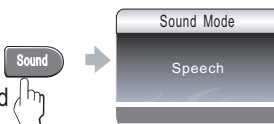
Select picture mode

You can select the picture mode from among three preset modes and one user-set mode. Press the [**Picture**] button repeatedly to select the desired picture mode.



Select sound mode

You can select the sound mode from among three preset modes and one user-set mode. Press the [**Sound**] button repeatedly to select the desired sound mode.



Use [Still] button

Press the [**Still**] button to snapshot the present picture, and press again to return to normal watching.

Use [Aspect] button

Press the [**Aspect**] button to change the screen aspect ratio among AUTO, Full screen, 4:3, Zoom1, Zoom2.

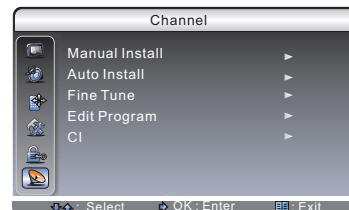
Mute function

Press [**Mute**] button repeatedly to switch between mute and unmute mode.

Using the Channel menu

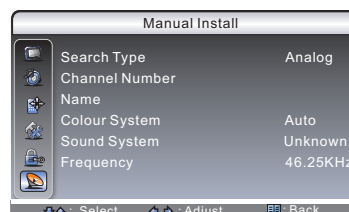
Auto Install

- 1) Press [**Menu**] button to enter main menu.
- 2) Press [**^** or **v**] button to select the item **Channel** and press [**>** or **OK**] button to enter **Channel** sub-menu.
- 3) Press [**^** or **v**] button to select **Auto Install**.
- 4) Press [**>** or **OK**] button to enter, and press [**^** or **v**] to choose the country you wanted.
- 5) Press [**^** or **v**] to choose Auto install and press [**>** or **OK**] to search the channels.
- 6) When channels searching, the programs from 900 ... will be allocated to analogical channels and the programs from 1... will be allocated to digital channels (DVB-T - TNT).



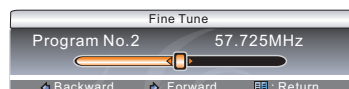
Manual Install

- 1) Press [**Menu**] button to enter main menu.
- 2) Press [**^** or **v**] button to select the item **Channel** and press [**>** or **OK**] button to enter **Channel** sub-menu.
- 3) Press [**^** or **v**] button to select **Manual Install**.
- 4) Press [**>** or **OK**] button to start manual searching.



Fine Tune

- 1) Press [**Menu**] button to enter main menu.
- 2) Press [**^** or **v**] button to select the item **Channel** and press [**>** or **OK**] button to enter **Channel** sub-menu.
- 3) Press [**^** or **v**] button to select **Fine Tune**, press [**>** or **OK**] button to enter.
- 4) Press [**<** or **>**] button to tune the current channel subtly.

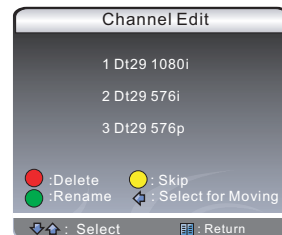


Using the TV features

Using the TV features

Edit Program

- 1) Press [**Menu**] button to enter main menu.
- 2) Press [**^ or v**] button to select the item **Channel** and press [**> or OK**] button to enter **Channel** sub-menu.
- 3) Press [**^ or v**] button to select **Edit Program**.
- 4) Press [**> or OK**] button to start Channel Edit.
- 5) Press the red button to delete the the current channel.
- 6) Press the green button to rename the the current channel.
- 7) Press the yellow button to skip the the current channel.
- 8) When you change the order of channel, press [**<**] button on the channel, press [**^ or v**] to move the cursor, and press [**>**] to change the order.

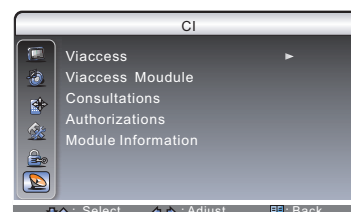
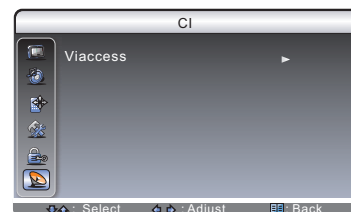


CI information

- 1) Press [**Menu**] button to enter main menu.
- 2) Press [**^ or v**] button to select the item **Channel** and press [**> or OK**] button to enter **Channel** sub-menu.
- 3) Press [**^ or v**] button to select the item **CI**.
- 4) Press [**> or OK**] button to enter the **CI** sub-menu.
- 5) Press [**> or OK**] button to enter the card information sub-menu.
- 6) Press [**^ or v**] button to select the item you are interested in.
- 7) Press [**> or OK**] button to see the information.

Note:

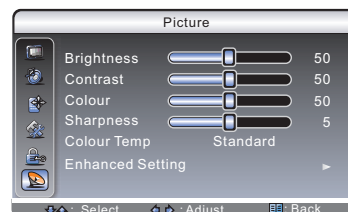
1. When you insert the PCMCIA card, you can see the **CI** item.
2. When you insert the PCMCIA card and the appropriate smart card, you can enjoy the scrambled program.
3. The graphic on the right is just for reference, the actual card brand may not be viaccess.



Using the Picture menu

Adjust picture settings

- 1) Press [**Menu**] button to enter main menu.
- 2) Press [**^ or v**] button to select the item **Picture** and press [**> or OK**] button to enter **Picture** sub-menu. .
- 3) Press [**^ or v**] button to select the item you want to adjust.
- 4) Press [**< or >**] button to adjust the level or open/shut some items which can improve the picture quality.
- 5) The adjusted data of Brightness, Contrast, Colour and Sharpness is memorized automatically in the user mode.



Using the TV features

Using the TV features

Colour Temp

- 1) Press [**Menu**] button to enter main menu.
- 2) Press [**^ or v**] button to select the item **Picture** and press [**> or OK**] button to enter **Picture** sub-menu.
- 3) Press [**^ or v**] button to select the item **Colour Temp**.
- 4) Press [**< or >**] button to select the mode of colour temperature.

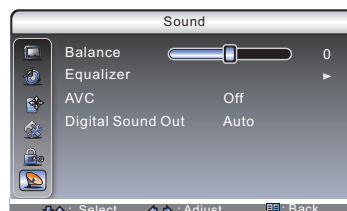
Enhanced Setting

- 1) Press [**Menu**] button to enter main menu.
- 2) Press [**^ or v**] button to select the item **Picture** and press [**> or OK**] button to enter **Picture** sub-menu.
- 3) Press [**^ or v**] button to select the item **Enhanced Setting**.
- 4) Press [**> or OK**] to enter and press [**^ or v**] button to select the item you want to adjust and press [**< or >**] to set it.

Using the Sound menu

Balance

- 1) Press [**Menu**] button to enter main menu.
- 2) Press [**^ or v**] button to select the item **Sound** and press [**> or OK**] button to enter **Sound** sub-menu.
- 3) Press [**^ or v**] button to select the item **Balance**.
- 4) Press [**< or >**] button to adjust the data.



Equalizer

- 1) Press [**Menu**] button to enter main menu.
- 2) Press [**^ or v**] button to select the item **Sound** and press [**> or OK**] button to enter **Sound** sub-menu.
- 3) Press [**^ or v**] button to choose **Equalizer** and press [**> or OK**] to enter.
- 4) Press [**< or >**] button to select the frequency you want to adjust and press [**^ or v**] button to change its value.



AVC

- 1) Press [**Menu**] button to enter main menu.
- 2) Press [**^ or v**] button to select the item **Sound** and press [**> or OK**] button to enter the **Sound** sub-menu.
- 3) Press [**^ or v**] button to choose **AVC** item and press [**< or >**] button to open/shut it.

AVC(automatic volume correction): Different programs may do not have the same volume level, this result in annoying volume changes, the AVC solves this problem by equalizing the volume level when it is **On**.

Note: the AVC function is just available in TV source.

Using the TV features

Using the TV features

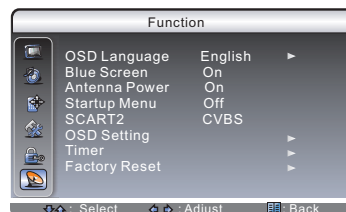
Digital Sound Out

- 1) Press [**Menu**] button to enter main menu.
- 2) Press [**^** or **v**] button to select the item **Sound** and press [**>** or **OK**] button to enter the sound sub-menu.
- 3) Press [**^** or **v**] button to choose **Digital Sound Out** item and press [**<** or **>**] button to select **Auto**, **PCM** or **Dolby**.

Using the Function menu

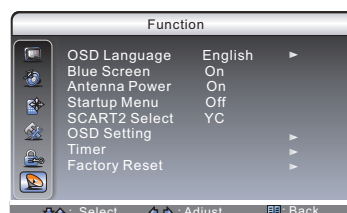
OSD language

- 1) Press [**Menu**] button to enter main menu.
- 2) Press [**^** or **v**] button to select the item **Function** and press [**>** or **OK**] button to enter **Function** sub-menu.
- 3) Press [**^** or **v**] button to select **OSD Language**, and press [**>** or **OK**] button to enter, and press [**^** or **v**] to select the proper language and press [**OK**] to enter.



Blue Screen/Startup Menu

- 1) Press [**Menu**] button to enter main menu.
- 2) Press [**^** or **v**] button to select the item **Function** and press [**>** or **OK**] button to enter **Function** sub-menu.
- 3) Press [**^** or **v**] button to select **Blue Screen/Startup/SCART2** sub-menu, and press [**<** or **>**] to select On/Off (CVBS/YC).



Note:

When you use the SCART2 and the picture is abnormal, please change to CVBS or YC, the default mode is CVBS.

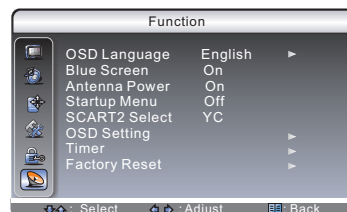
Antenna power

- 1) Press [**Menu**] button to enter main menu.
- 2) Press [**^** or **v**] button to select the item **Function** and press [**>** or **OK**] button to enter **Function** sub-menu.
- 3) Press [**^** or **v**] button to select **Antenna Power**.
- 4) Press [**<** or **>**] button to select **On/Off**.

Note: When you use the antenna which needs the power supply from outside, please select [On], otherwise select [Off].

OSD Setting

- 1) Press [**Menu**] button to enter main menu.
- 2) Press [**^** or **v**] button to select the item **Function** and press [**>** or **OK**] button to enter **Function** sub-menu.
- 3) Press [**^** or **v**] button to select **OSD Setting**, and press [**>** or **OK**] to enter.
- 4) Press [**<** or **>**] button to set the showing time of the **OSD /transparency**.

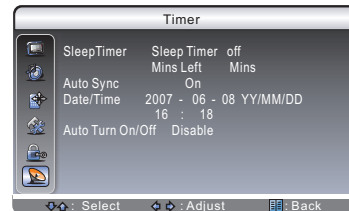


Using the TV features

Using the TV features

Timer

- 1) Press [**Menu**] button to enter main menu.
- 2) Press [**^** or **v**] button to select the item **Function** and press [**>** or **OK**] button to enter **Function** sub-menu.
- 3) Press [**^** or **v**] button to select **Timer** item, and press [**>** or **OK**] to enter.
- 4) Press [**^** or **v**] button to select the showing item: Sleep Timer, Auto Sync, Date/Time, Auto Turn On/Off.
- 3) Press [**<** or **>**] button to set the Sleep Timer, such as 10mins,20mins and so on.
- 4) When you set the Date/Time,press [**<** or **>**] to move the cursor and press the numbers to set it.
- 5) When you set **Auto Sync On**, the time on the TV is received from the digital TV signal.
- 6) When you select Auto Turn On Enable, you can set when TV is turn on or off.



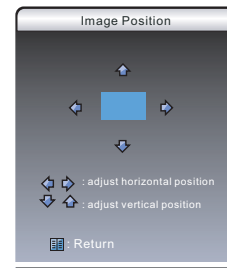
Factory Reset

- 1) Press [**Menu**] button to enter main menu.
 - 2) Press [**^** or **v**] button to select the item **Function** and press [**>** or **OK**] button to enter **Function** sub-menu.
 - 3) Press [**^** or **v**] button to select **Factory Reset**, and press [**>** or **OK**] to enter, Press [**^** or **v**] to select Yes or NO.
 - 4) Press [**OK**] to confirm.
- NOTE: you can use this function when this unit is in an abnormal state or you want to make it return to the factory reset.**

Using the Screen menu

Setting screen position

- 1) Press [**Menu**] button to enter main menu.
- 2) Press [**^** or **v**] button to select the item **Screen** and press [**>** or **OK**] button to enter **Screen** sub-menu.
- 3) Press [**^** or **v**] button to select **Image Position** and press [**>** or **OK**] button to enter **Image Position** sub-menu .
- 4) Press [**<** or **>**] button to adjust the horizontal position of the picture.
- 5) Press [**^** or **v**] button to adjust the vertical position of the picture.



Using the TV features

Using the TV features

Using the Parental Control menu

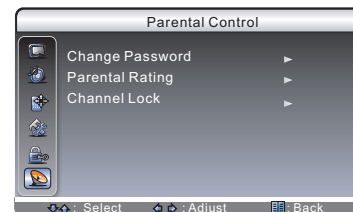
- 1) Press [**Menu**] button to enter main menu.
- 2) Press [**^ or v**] button to select the item **Parental Control** and press [**> or OK**] button to enter the **Input Password** sub-menu.
- 3) This menu will display on the screen as shown on the right.
- 4) When you input the password, you will enter the Parental Control menu, then you can change password, set parental rating and channel lock.



Note: When you first use this function, the default password is [0000]. Only you input this password, you can continue to the next operation.

Change Password

- 1) After you enter the Parental Control menu, press the [**^ or v**] button to select **Change Password**, and press [**> or OK**] button to enter **Change Password** sub-menu.
- 2) Input the new password that you want to use and confirm it.
- 3) The new password is effective when you enter the Parental Control menu again.



Parental Rating

- 1) After you enter the **Parental Control** menu, press the [**^ or v**] button to select **Parental Rating**, and press [**> or OK**] button to enter **Parental Rating** sub-menu.
- 2) Press [**> or OK**] button to enter **Censorship** sub-menu.
- 3) Press [**< or >**] button to select the rating that you want to use.

Channel Lock

- 1) After you enter the **Parental Control** sub-menu, press the [**^ or v**] button to select **Channel Lock**, and press [**> or OK**] button to enter **Channel Lock** sub-menu.
- 2) Press [**^ or v**] button to select the program that you want to lock / unlock.
- 3) Press [**OK**] button to lock the program, and press [**OK**] button again to unlock it.

Teletext operations

Selecting teletext mode

- 1) Select the channel that is broadcasting the desired Teletext program.
 - 2) Press [**Text**] button and alternate between Teletext mode and normal mode.
- Note: All the operations below should be under the Teletext mode.

Page selection

You can directly input your desired page number by pressing [**0-9**] buttons.
You can sequentially read pages by pressing [**^ or v**] button.

Using the TV features

Using the TV features

Hold

Some Teletext information is contained on more than one page, the pages are automatically changing after a given reading time.
Press [**Hold**] button to stop the page changing, and press it again to allow the page to change.

Reveal

Some Teletext pages contain quiz or questions with hidden answers.
Press [**Reveal**] button to see the answers, and press again to hide the answers.

Sub code

Some Teletext pages contain sub page that requires you to input the sub code.
Press [**Sub.Code**] button until S:0000 is displayed, and enter last four-digit sub code for the sub page you need.

Cancel

When a page is selected in Teletext mode, it may take some time before it becomes available.
Press [**Cancel**] button to switch to the TV mode.
When required page is found, the page number will appear at the top of the TV picture, press [**Cancel**] button to return to the selected Teletext page.

Mix

You can mix Teletext with TV pictures, which means transparent teletext.
Press [**Mix**] to mix, and press [**Mix**] again to cancel the mixed effect.

Zoom (top/bottom/full)

Press the [**Zoom**] to display the top half of the page.
Press again to display the bottom half of the page.
Press again to return to a full page display.
Note: Changing pages reverts to a full page display.

Fast text

The RED, GREEN, YELLOW & CYAN buttons are used for quick access to colour coded pages transmitted by FAST TEXT broadcast.

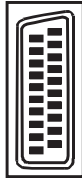
Index

Teletext index page guides you quickly to your desired page.
Press [**Index**] button to enter index page.

Appendix

Appendix

The SCART interface



Also known as Peritel, this standard provides a cheap multi-signal connector to domestic TV and other video equipment.

Arrangement 1 is the original and allows for composite video input/output, RGB inputs and stereo audio input/output.

Arrangement 2 allows for composite video input, and stereo audio input/output.

Caution:

The output of video and audio of SCART1 are always from tuner or R F.

The SCART1 output is not available when you turn on the TV and the source is not TV, when you change to TV and from then on, the SCART1 output is available.

SCART Connector Pinout Details

SCART arrangement 1

Pin	Signal	Signal level	Impedance
1	Audio output B (right)	0.5V rms	<1kohm
2	Audio input B (right)	0.5V rms	>10kohm
3	Audio output A (left)	0.5V rms	<1kohm
4	Ground (audio)	-	-
5	Ground (blue)	-	-
6	Audio input A (left)	0.5V rms	>10kohm
7	Blue input	0.7V	75ohms
8	Function select (AV control)	High (9.5-12V) - AV mode Mid (5-8V) Wide-Screen Low (0-2V) - TV mode	>10kohm
9	Ground (green)	-	-
10			
11	Green input	0.7V	75ohms
12			
13	Ground (red)	-	-
14	Ground (blanking)	-	-
15	Red input	0.7V	75ohms
16	RGB switching control	High (1-3V) - RGB Low (0-0.4V) - Composite	75ohms
17	Ground (video input & output)	-	-
18	Ground (RGB Switching Control)	-	-
19	Video output (composite)	1V including sync	75ohms
20	Video input (composite)	1V including sync	75ohms
21	Common ground (shield)	-	-

Appendix

SCART arrangement 2			
Pin	Signal	Signal level	Impedance
1	Audio output B (right)	0.5V rms	<1kohm
2	Audio input B (right)	0.5V rms	>10kohm
3	Audio output A (left)	0.5V rms	<1kohm
4	Ground (audio)	-	-
5	Ground	-	-
6	Audio input A (left)	0.5V rms	>10kohm
7	-	-	-
8	Function select (AV control)	High(9.5-12V)- AV mode Mid(5-8V)Wide-Screen Low (0-2V) - TV mode	>10kohm
9	Ground	-	-
10	-	-	-
11	-	-	-
12	-	-	-
13	Ground	-	-
14	Ground (blanking)	-	-
15	Chrominance input	0.3V	
16	-	-	-
17	Ground (video input & output)	-	-
18	-	-	-
19	Video output (composite)	1V including sync	75ohms
20	Video/luminance input	1V including sync	75ohms
21	Common ground (shield)	-	-

WARNING: Do NOT attempt to work on ANY equipment unless you KNOW what you are doing.

Cleaning and care

WARNING: Do not try to remove the cabinet back. Refer servicing to qualified service technicians.

To clean the TV screen:

- 1) Unplug the TV to avoid possible shock hazard.
- 2) Use a clean cellulose sponge or chamois cloth dampened with a solution of mild detergent and warm water to clean the TV screen and trim. Do not use too much water as water spilled into the cabinet can cause damage to the TV.
- 3) Wipe off any excess moisture with a clean dry cloth.
- 4) Polish the cabinet with a quality furniture polish to maintain the finish and appearance of the cabinet.

Caution:

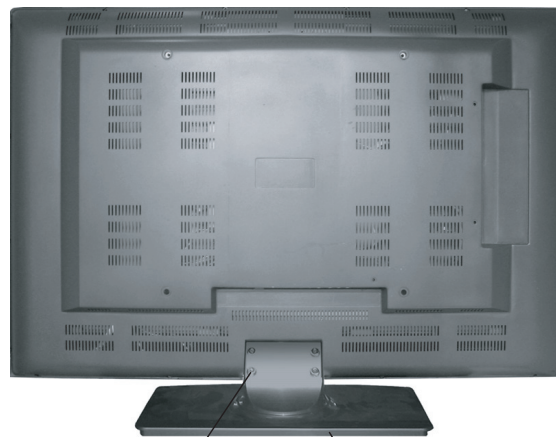
Never use strong solvents such as thinner, benzene, or other chemicals on or near the cabinet. These chemicals can damage the finish of the cabinet.

Appendix

Appendix

The installation of the pedestal

1. Lay the soft froth on the table which can hold enough weight of the whole TV in case of causing damage to TV or person.
2. Put the TV on the froth ,with its back upwards and the LCD downwards.
3. Take out the pedestal, and insert the base groupware into the relevant position of the TV set until all the holes match each other completely.
4. Fasten the base groupware and the TV set together with screws.
5. Erect the TV set, and put it on the proper position for watching.



Note:

The above figures are for reference only, please refer to the actual units to determine the appearances.
Every hole of the pedestal must be fastened with screws!

Appendix

Specifications

Native Resolution: 1366 × 768 Pixels (corresponding to WXGA)
 Colour System: PAL/SECAM
 Sound System: B/G, D/K, I, L/L'
 Tuner: VHF/UHF: 48.25~863.25MHz
 Antenna: 75 Ω VHF/UHF input
 Stereo: NICAM/A2

VIDEO INPUT:

SCART-1 (Video and RGB) Video: 1 Vp-p, negative sync, 75 Ω input
 RGB: 0.7 Vp-p, 75 Ω input
 SCART-2 (Video) Video: 1 Vp-p, negative sync, 75 Ω input
 Audio in Stereo audio input for SCART1 and SCART2
 COMPONENT RCA, 0.7 Vp-p/75 Ω input
 (480I/60Hz, 480P/60Hz, 576I/50Hz, 576P/50Hz,
 720P/60Hz, 1080I/50, 1080I/60Hz)
 Audio in RCA Stereo audio input

PC INPUT:

VGA 15 Pin , Analog RGB signal, 0.7Vp-p, 75Ω input
 (VGA, SVGA, XGA)
 Audio in Mini-jack(3.5φ)X1

MONITOR OUT

Audio/Video Output SCART1: CANAL+
 Power Requirement Please refer to the rating label

	DLT-26H1	DLT-32H1
Screen Size	66 cm	81cm
Speaker Output	4W+4W	6W+6W
Power Consumption	Please refer to the rating label	
Dimensions(mm) L/D/H (comprise pedestal)	670/208 /516	800/ 240 /598
Gross Weight (comprise pedestal)	14kg	19kg

Allowable temperature of operation environment

.....0°C to 40°C

ACCESSORIES






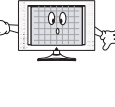


Operating Instructions 1
 Remote Control Unit 1
 Power Lead 1
 Dry Cell Battery 2
 SCART-AV terminal(for 26") 1

Note: Specifications and design are subject to possible modifications without notice due to improvements

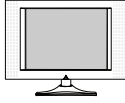
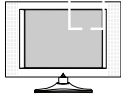

Appendix

Symptoms and solutions

Please check the following list prior to calling Daewoo Electronics Service Centre for assistance.

Symptom	Check items
Neither picture nor sound 	<ul style="list-style-type: none"> - Check the contact of sockets is all right. - Check the TV main power is on.
Picture is OK but no sound 	<ul style="list-style-type: none"> - Check the Volume control is set to minimum or mute.
Sound is OK, but no colour. 	<ul style="list-style-type: none"> - Check the colour control and adjust it properly. - Check the program is in colour and not in black & white.
The picture has image. 	<ul style="list-style-type: none"> - Check the antenna is installed correctly and if not, adjust the overlapped antenna toward the broadcasting station.
Picture has "snow noise". 	<ul style="list-style-type: none"> - Check the antenna or its connection is correct and if not, correct the antenna fault or connection cable fault. - Check if car traffic or neon sign disturbs the sound effect.
Stripes on picture. 	<ul style="list-style-type: none"> - Check the susceptible interference by other electronic devices such as radio and television and keep magnetic or electronic devices away from the TV
Bad stereo or Dual sound. 	<ul style="list-style-type: none"> - Long distance from the station or other radio waves can generate bad sound reception. If so, change the mode to Mono.
Remote control does not work. 	<ul style="list-style-type: none"> - Check if the batteries in the Remote control are dead. - Check if any object between IR sensor of the TV and the Remote control does not obstruct.

In PC mode

Symptom	Check items
Signal is abnormal 	<ul style="list-style-type: none">- Check the resolution and frequency of your PC. Then, adjust them to optimum condition for LCD TV.- Refer to the table of PC mode input format (If registered resolution and frequency on the table no listed then no picture will be displayed.)
“NO SIGNAL” appears on the screen 	<ul style="list-style-type: none">- Ensure that the signal cable is firmly connected to PC and TV.
Image is not clear. 	<ul style="list-style-type: none">- Adjust the PHASE control.

● AFTER SALES SERVICE

Do not hesitate to contact your retailer or service agent if a change in the performance of your product indicates that a faulty condition may be present.

